



PICHGOSTARAN FASTENERS

HIGH TENSILE FASTENERS FOR OIL, GAS & PETROCHEMICAL



ALLFASTENERS

SERVICE | SOLUTIONS | SUPPLY FOR ALL YOUR FASTENING NEEDS®



ALLFASTENERS

SERVICE | SOLUTIONS | SUPPLY FOR ALL YOUR FASTENING NEEDS

FASTENERS FOR INDUSTRY

ALLFASTENERS is a family-owned & operated business founded in 1994. We specialise in production and supply of fasteners to the petrochemical, mining and construction industries.



ALLFASTENERS early beginnings started with the supply of quality fasteners for the needs of the local construction and manufacturing markets. Since then we have grown into a global company servicing these industries across Australia, Asia-Pacific and the United States. Our development and expansion into manufacturing and supply of Studbolt fasteners is through the recognition of our customers' requirements in the local and Asia-Pacific region. We have proudly invested in stock, machinery and experts to meet the needs of the oil, gas & petrochemical market through our service | solutions | supply.

Manufactured To Order

ALLFASTENERS stock levels contain most common sizes and grades. We are also capable of producing specific sizes in very short lead times. This service can assist with projects that have immediate requirements ensuring that down time is kept to a minimum. ALLFASTENERS staff can also assist with quoting on bespoke fasteners from supplied drawings and specifications.

Country Of Origin (COO)

For many of our clients the Country of Origin on piping products is a concern. ALLFASTENERS stock and can quote studbolts, hex bolts and anchor bolts with all Test Certificates and Mill certificates to comply with COO if and as required.

ISO 9001:2008





ALLFASTENERS holds a Management System Conformity Certificate ISO 9001:2008 accreditation, granted to us for implementing quality management systems, standards and guidelines according to ISO 9001:2008 for the supply and express delivery of fasteners to the industrial, heavy industry, mining and construction industries. Certificate No. AU1439.

PICHGOSTARAN.COM
پیشگستان انرژی پارس

CONTENTS

PLATING & COATINGS 3

HIGH TENSILE FASTENERS

B7 / 2H STUDBOLT KIT	5	
IMPERIAL & METRIC THREAD PITCH TABLE	6	
HEAVY HEX NUT	27	
DIMENSIONS	28	
B7 / B7M HEAVY HEX BOLTS	37	
DIMENSIONS	38	
6ft ALLTHREAD	39	
IMPERIAL / METRIC EQUIVALENT	40	

TECHNICAL

CHEMICAL & MECHANICAL PROPERTIES – HIGH TENSILE BOLTS	46
CHEMICAL & MECHANICAL PROPERTIES – HEAVY HEX NUTS	48
UNIT CONVERSION TABLE	50





PLATING & COATINGS

It is recommended that high-tensile fasteners are coated for use in Petrochemical or offshore applications. It both benefits the installation and maintenance but also the life of the assembly. Coating provides excellent corrosion protection and lubrication for fasteners under many and varied environments. Coatings are applied at the time of manufacture.

XYLAN - BLUE & GREEN

A unique fluoropolymer chemistry incorporating plastics and corrosion inhibitors such as PTFE, Xylan coatings are frequently specified as the preferred option for improving the surface properties of offshore components. Xylan offers excellent corrosion and chemical resistance and works well under high loads and high temperatures. It will reduce significantly the friction coefficient of fasteners which facilitates even tension. The lowering of friction actually increases the effective tension of the fastener as a result of reducing the wasted shear stress.

- A non-stick thread lubrication available in many colours for easy identification
- Improves ease of maintenance and eliminates hydrogen embrittlement
- Working temperature range -250°C to 285°C
- Hex nuts are coated internally



Xylan Green

MOLYBDENUM 'MOLY' DISULFIDE

Moly is a combination of molybdenum disulfide lubricant and high performance resins that are thermally cured to ensure a complete bond to the base metal material. Moly coating lubricates the thread by transferring between the two mating surfaces 'sacrificially', this assists to lower the coefficient of friction and increase life of the fastener. Commonly used in applications where load carrying capacity, operating temperature and coefficient of friction are primary concerns.

- Corrosion resistant up to 350°C
- Provides an undercoat for epoxy paints
- Resistant to both acids and alkalines

ZINC

Zinc plating is used as a common light duty anti-rust protective coating, with its high quality finish and consistent thickness zinc plating can be used as a base for further PTFE coatings. Zinc



B8M Strain Hardened



Xylan Blue

PLATING & COATINGS



Alignment Pins



HDG (left) compared with Mechanical Galvanised (right)

plating will eliminate hydrogen embrittlement problems and blocked threads that can occur with fasteners that are exposed to increased pressure and temperature.

ZINC NICKEL

Zinc Nickel is recognised as an environmentally safe alternative to other electroplating methods such as cadmium. Zinc Nickel can be used in applications to reduce the galvanic reactions of dissimilar metals.

INORGANIC ZINC SILICATE

Inorganic Zinc Silicate provides excellent protection in petrochemical, refineries and offshore application and can provide better corrosion protection when used as a base coat for lubricant type coatings.

HOT DIP GALVANISE (HDG)

A common treatment of high-tensile fasteners in which the material is submerged in molten zinc (above 450°C) producing a constant oxide coating that is formed in the final process as it becomes exposed to the atmosphere. The resulting galvanise coating is tough and durable, the process allows a consistent coating to internal and external surfaces providing excellent abrasion resistances. The dull coating in appearance is an important advantage of the process showing that the article is completely protected and gives an excellent guide to coating quality.

Mechanical Galvanising is also possible on our studs and fasteners. A more expensive process than HDG, the obvious benefit over the latter is a very uniform coating thickness reducing thread fit issues at assembly. Please contact Allfasteners staff for further information regarding mechanical galvanise coating.

B7 / B7M
Heavy Hex Bolts
see page 37



Codes Finishes & Coatings

U	Plain	C	Cadmium
G	Galvanised	XB	Xylan (Blue)
Z	Zinc	XG	Xylan (Green)
ZN	Zinc Nickel	MB	Molybdenum 'Moly' Disulfide
S	Inorganic Zinc Silicate	PO	Phosphate & Oil
Y	Zinc Yellow		

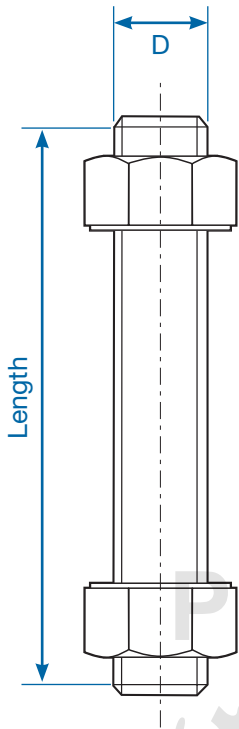


TM

SERVICE | SOLUTIONS | SUPPLY
FOR ALL YOUR FASTENING NEEDS



QUALITY, INTEGRITY & SERVICE
SINCE 1994



**QUALITY
ASSURED**

FULL THREAD STUDS

OUR STUD BOLT LENGTHS MEASURE FIRST THREAD TO FIRST THREAD. ENSURING THE CORRECT AMOUNT OF LEAD THREADS ARE STILL VISIBLE ONCE INSTALLED. THIS LENGTH IS CALCULATED BETWEEN CHAMFERED ENDS, A GUARANTEED SIGN OF QUALITY & CARE

IMPERIAL & METRIC THREAD PITCH

Size	Imperial (TPI) Threads Per Inch					Metric Thread Pitch		
	UNC	UN8	UNF	BSW	BSF	Size	Coarse	Fine
1/8"	40	-	44	40	-	M3	0.5	0.35
	32	-	36	-	-	M4	0.7	0.50
3/16"	24	-	32	24	32	M5	0.8	0.50
1/4"	20	-	28	20	26	M6	1	0.75
5/16"	18	-	24	18	22	M8	1.25	1
3/8"	16	-	24	16	20	M10	1.5	1.25
1/2"	13	-	20	14	18	M12	1.75	1.5
9/16"	12	-	18	12	16	M14	2	1.5
5/8"	11	-	18	11	14	M16	2	1.5
	-	-	-	-	-	M18	2.5	1.5
3/4"	10	-	16	10	12	M20	2.5	1.5
7/8"	9	-	14	9	11	M22	2.5	1.5
1"	8	8	12 (14)	8	10	M24	3	2
1 1/8"	7	8	12	7	9	M27	3	2
1 1/4"	7	8	12	7	9	M30	3.5	2
1 3/8"	6	8	12	6	8	M33	3.5	2
1 1/2"	6	8	12	6	8	M36	4	3
1 5/8"	-	8	-	5	8	M39	4	3
	-	-	-	-	-	M42	4.5	-
1 3/4"	5	8	-	5	7	M45	4.5	-
1 7/8"	-	8	-	-	-	M48	5	-
2"	4.5	8	-	4.5	7	M52	5	-
2 1/4"	4.5	8	-	4	6	M56	5.5	-
	-	-	-	-	-	M60	5.5	-
2 1/2"	1	8	-	4	6	M64	6	-
2 3/4"	4	8	-	3.5	6	M72	6	-
3"	4	8	-	3.5	5	M80	6	-
3 1/4"	4	8	-	3.25	5	M-	-	-
3 1/2"	4	8	-	3.25	4.5	M90	6	-
3 3/4"	4	8	-	3	4.5	M-	-	-
4"	4	8	-	3	4.5	M100	6	-



1/2" UNC B7 / 2H Studbolt

ASTM B7 A193/A193M
2H A194/A194M



Product No.	Size	Length (mm)	Length (inch)	Weight (kg) Stud Only	Weight (kg) Stud+2xNut
6B7SBNU?12050	1/2"	50	2"	0.04	0.10
6B7SBNU?12060	1/2"	60	2 1/4"	0.05	0.11
6B7SBNU?12065	1/2"	65	2 1/2"	0.05	0.11
6B7SBNU?12070	1/2"	70	2 3/4"	0.06	0.12
6B7SBNU?12075	1/2"	75	3"	0.06	0.12
6B7SBNU?12080	1/2"	80	3 1/4"	0.06	0.12
6B7SBNU?12090	1/2"	90	3 1/2"	0.07	0.13
6B7SBNU?12095	1/2"	95	3 3/4"	0.08	0.14
6B7SBNU?12100	1/2"	100	4"	0.08	0.14
6B7SBNU?12110	1/2"	110	4 1/4"	0.09	0.15
6B7SBNU?12115	1/2"	115	4 1/2"	0.09	0.15
6B7SBNU?12120	1/2"	120	4 3/4"	0.10	0.16
6B7SBNU?12125	1/2"	125	5"	0.10	0.16
6B7SBNU?12130	1/2"	130	5 1/4"	0.10	0.16
6B7SBNU?12140	1/2"	140	5 1/2"	0.11	0.17
6B7SBNU?12145	1/2"	145	5 3/4"	0.12	0.18
6B7SBNU?12150	1/2"	150	6"	0.12	0.18
6B7SBNU?12160	1/2"	160	6 1/4"	0.13	0.19
6B7SBNU?12165	1/2"	165	6 1/2"	0.13	0.19
6B7SBNU?12170	1/2"	170	6 3/4"	0.14	0.20
6B7SBNU?12180	1/2"	180	7"	0.14	0.20
6B7SBNU?12185	1/2"	185	7 1/4"	0.15	0.21
6B7SBNU?12190	1/2"	190	7 1/2"	0.15	0.21
6B7SBNU?12195	1/2"	195	7 3/4"	0.16	0.22
6B7SBNU?12200	1/2"	200	8"	0.16	0.22
6B7SBNU?12210	1/2"	210	8 1/4"	0.17	0.23
6B7SBNU?12215	1/2"	215	8 1/2"	0.17	0.23
6B7SBNU?12220	1/2"	220	8 3/4"	0.18	0.24
6B7SBNU?12230	1/2"	230	9"	0.18	0.24
6B7SBNU?12235	1/2"	235	9 1/4"	0.19	0.25
6B7SBNU?12240	1/2"	240	9 1/2"	0.19	0.25
6B7SBNU?12250	1/2"	250	9 3/4"	0.20	0.26
6B7SBNU?12255	1/2"	255	10"	0.20	0.26
6B7SBNU?12260	1/2"	260	10 1/4"	0.21	0.27
6B7SBNU?12265	1/2"	265	10 1/2"	0.21	0.27
6B7SBNU?12275	1/2"	275	10 3/4"	0.22	0.28
6B7SBNU?12280	1/2"	280	11"	0.22	0.28
6B7SBNU?12285	1/2"	285	11 1/4"	0.23	0.29
6B7SBNU?12290	1/2"	290	11 1/2"	0.23	0.29
6B7SBNU?12300	1/2"	300	11 3/4"	0.24	0.30
6B7SBNU?12305	1/2"	305	12"	0.24	0.30

1/2" UNC continued on page 8



STUDBOLT KIT
5/8" UNC

1/2" UNC continued from page 7

Product No.	Size	Length (mm)	Length (inch)	Weight (kg) Stud Only	Weight (kg) Stud+2xNut
6B7SBNU?12310	1/2"	310	12 1/4"	0.25	0.31
6B7SBNU?12320	1/2"	320	12 1/2"	0.26	0.32
6B7SBNU?12325	1/2"	325	12 3/4"	0.26	0.32
6B7SBNU?12330	1/2"	330	13"	0.26	0.32
6B7SBNU?12335	1/2"	335	13 1/4"	0.27	0.33
6B7SBNU?12345	1/2"	345	13 1/2"	0.28	0.34
6B7SBNU?12350	1/2"	350	13 3/4"	0.28	0.34

? = finish/coating codes; see page 4



Product No.	Size	Length (mm)	Length (inch)	Weight (kg) Stud Only	Weight (kg) Stud+2xNut
6B7SBNU?16050	5/8"	50	2"	0.06	0.16
6B7SBNU?16060	5/8"	60	2 1/4"	0.08	0.18
6B7SBNU?16065	5/8"	65	2 1/2"	0.08	0.18
6B7SBNU?16070	5/8"	70	2 3/4"	0.09	0.19
6B7SBNU?16075	5/8"	75	3"	0.09	0.19
6B7SBNU?16080	5/8"	80	3 1/4"	0.10	0.20
6B7SBNU?16090	5/8"	90	3 1/2"	0.11	0.21
6B7SBNU?16095	5/8"	95	3 3/4"	0.12	0.22
6B7SBNU?16100	5/8"	100	4"	0.13	0.23
6B7SBNU?16110	5/8"	110	4 1/4"	0.14	0.24
6B7SBNU?16115	5/8"	115	4 1/2"	0.14	0.24
6B7SBNU?16120	5/8"	120	4 3/4"	0.15	0.25
6B7SBNU?16125	5/8"	125	5"	0.16	0.26
6B7SBNU?16130	5/8"	130	5 1/4"	0.16	0.26
6B7SBNU?16140	5/8"	140	5 1/2"	0.18	0.28
6B7SBNU?16145	5/8"	145	5 3/4"	0.18	0.28
6B7SBNU?16150	5/8"	150	6"	0.19	0.29
6B7SBNU?16160	5/8"	160	6 1/4"	0.20	0.30
6B7SBNU?16165	5/8"	165	6 1/2"	0.21	0.31
6B7SBNU?16170	5/8"	170	6 3/4"	0.21	0.31
6B7SBNU?16180	5/8"	180	7"	0.23	0.33
6B7SBNU?16185	5/8"	185	7 1/4"	0.23	0.33
6B7SBNU?16190	5/8"	190	7 1/2"	0.24	0.34
6B7SBNU?16195	5/8"	195	7 3/4"	0.25	0.35
6B7SBNU?16200	5/8"	200	8"	0.25	0.35
6B7SBNU?16210	5/8"	210	8 1/4"	0.26	0.36
6B7SBNU?16215	5/8"	215	8 1/2"	0.27	0.37
6B7SBNU?16220	5/8"	220	8 3/4"	0.28	0.38



5/8" UNC
B7 / 2H Studbolt

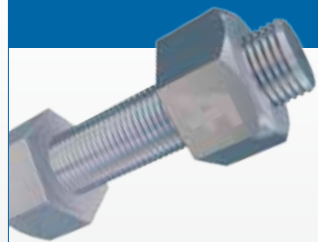


Product No.	Size	Length (mm)	Length (inch)	Weight (kg) Stud Only	Weight (kg) Stud+2xNut
6B7SBNU?16230	5/8"	230	9"	0.29	0.39
6B7SBNU?16235	5/8"	235	9 1/4"	0.30	0.40
6B7SBNU?16240	5/8"	240	9 1/2"	0.30	0.40
6B7SBNU?16250	5/8"	250	9 3/4"	0.31	0.41
6B7SBNU?16255	5/8"	255	10"	0.32	0.42
6B7SBNU?16260	5/8"	260	10 1/4"	0.33	0.43
6B7SBNU?16265	5/8"	265	10 1/2"	0.33	0.43
6B7SBNU?16275	5/8"	275	10 3/4"	0.35	0.45
6B7SBNU?16280	5/8"	280	11"	0.35	0.45
6B7SBNU?16285	5/8"	285	11 1/4"	0.36	0.46
6B7SBNU?16290	5/8"	290	11 1/2"	0.36	0.46
6B7SBNU?16300	5/8"	300	11 3/4"	0.38	0.48
6B7SBNU?16305	5/8"	305	12"	0.38	0.48
6B7SBNU?16310	5/8"	310	12 1/4"	0.39	0.49
6B7SBNU?16320	5/8"	320	12 1/2"	0.40	0.50
6B7SBNU?16325	5/8"	325	12 3/4"	0.41	0.51
6B7SBNU?16330	5/8"	330	13"	0.41	0.51
6B7SBNU?16335	5/8"	335	13 1/4"	0.42	0.52
6B7SBNU?16345	5/8"	345	13 1/2"	0.43	0.53
6B7SBNU?16350	5/8"	350	13 3/4"	0.44	0.54

? = finish/coating codes; see page 4

3/4" UNC
B7 / 2H Studbolt

ASTM B7 A193/A193M
2H A194/A194M



Product No.	Size	Length (mm)	Length (inch)	Weight (kg) Stud Only	Weight (kg) Stud+2xNut
6B7SBNU?20050	3/4"	50	2"	0.09	0.27
6B7SBNU?20060	3/4"	60	2 1/4"	0.11	0.29
6B7SBNU?20065	3/4"	65	2 1/2"	0.12	0.30
6B7SBNU?20070	3/4"	70	2 3/4"	0.13	0.31
6B7SBNU?20075	3/4"	75	3"	0.14	0.32
6B7SBNU?20080	3/4"	80	3 1/4"	0.15	0.33
6B7SBNU?20090	3/4"	90	3 1/2"	0.17	0.35
6B7SBNU?20095	3/4"	95	3 3/4"	0.18	0.36
6B7SBNU?20100	3/4"	100	4"	0.19	0.37
6B7SBNU?20110	3/4"	110	4 1/4"	0.20	0.38
6B7SBNU?20115	3/4"	115	4 1/2"	0.21	0.39
6B7SBNU?20120	3/4"	120	4 3/4"	0.22	0.40
6B7SBNU?20125	3/4"	125	5"	0.23	0.41
6B7SBNU?20130	3/4"	130	5 1/4"	0.24	0.42
6B7SBNU?20140	3/4"	140	5 1/2"	0.26	0.44
6B7SBNU?20145	3/4"	145	5 3/4"	0.27	0.45

3/4" UNC continued on page 10

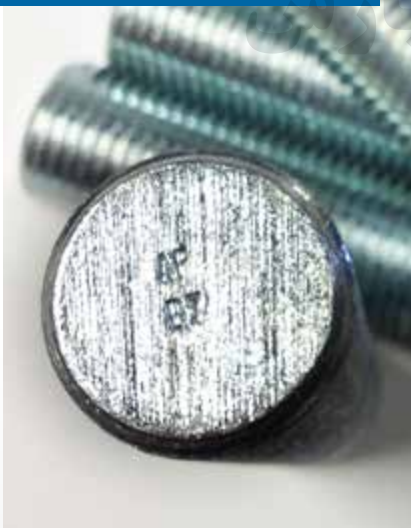


STUDBOLT KIT
3/4" UNC

3/4" UNC
B7 / 2H Studbolt



Head Markings



3/4" UNC continued from page 9

Product No.	Size	Length (mm)	Length (inch)	Weight (kg) Stud Only	Weight (kg) Stud+2xNut
6B7SBNU?20150	3/4"	150	6"	0.28	0.46
6B7SBNU?20160	3/4"	160	6 1/4"	0.30	0.48
6B7SBNU?20165	3/4"	165	6 1/2"	0.31	0.49
6B7SBNU?20170	3/4"	170	6 3/4"	0.32	0.50
6B7SBNU?20180	3/4"	180	7"	0.34	0.52
6B7SBNU?20185	3/4"	185	7 1/4"	0.34	0.52
6B7SBNU?20190	3/4"	190	7 1/2"	0.35	0.53
6B7SBNU?20195	3/4"	195	7 3/4"	0.36	0.54
6B7SBNU?20200	3/4"	200	8"	0.37	0.55
6B7SBNU?20210	3/4"	210	8 1/4"	0.39	0.57
6B7SBNU?20215	3/4"	215	8 1/2"	0.40	0.58
6B7SBNU?20220	3/4"	220	8 3/4"	0.41	0.59
6B7SBNU?20230	3/4"	230	9"	0.43	0.61
6B7SBNU?20235	3/4"	235	9 1/4"	0.44	0.62
6B7SBNU?20240	3/4"	240	9 1/2"	0.45	0.63
6B7SBNU?20250	3/4"	250	9 3/4"	0.47	0.65
6B7SBNU?20255	3/4"	255	10"	0.47	0.65
6B7SBNU?20260	3/4"	260	10 1/4"	0.48	0.66
6B7SBNU?20265	3/4"	265	10 1/2"	0.49	0.67
6B7SBNU?20275	3/4"	275	10 3/4"	0.51	0.69
6B7SBNU?20280	3/4"	280	11"	0.52	0.70
6B7SBNU?20285	3/4"	285	11 1/4"	0.53	0.71
6B7SBNU?20290	3/4"	290	11 1/2"	0.54	0.72
6B7SBNU?20300	3/4"	300	11 3/4"	0.56	0.74
6B7SBNU?20305	3/4"	305	12"	0.57	0.75
6B7SBNU?20310	3/4"	310	12 1/4"	0.58	0.76
6B7SBNU?20320	3/4"	320	12 1/2"	0.60	0.78
6B7SBNU?20325	3/4"	325	12 3/4"	0.61	0.79
6B7SBNU?20330	3/4"	330	13"	0.61	0.79
6B7SBNU?20335	3/4"	335	13 1/4"	0.62	0.80
6B7SBNU?20345	3/4"	345	13 1/2"	0.64	0.82
6B7SBNU?20350	3/4"	350	13 3/4"	0.65	0.83
6B7SBNU?20355	3/4"	355	14"	0.66	0.84
6B7SBNU?20360	3/4"	360	14 1/4"	0.67	0.85
6B7SBNU?20370	3/4"	370	14 1/2"	0.69	0.87
6B7SBNU?20375	3/4"	375	14 3/4"	0.70	0.88
6B7SBNU?20380	3/4"	380	15"	0.71	0.89
6B7SBNU?20385	3/4"	385	15 1/4"	0.72	0.90
6B7SBNU?20395	3/4"	395	15 1/2"	0.74	0.92
6B7SBNU?20400	3/4"	400	15 3/4"	0.74	0.92
6B7SBNU?20405	3/4"	405	16"	0.75	0.93
6B7SBNU?20415	3/4"	415	16 1/4"	0.77	0.95



3/4" UNC
B7 / 2H Studbolt

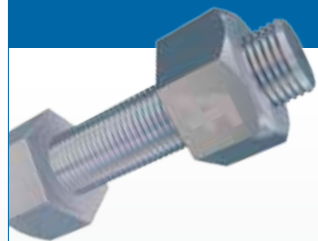


Product No.	Size	Length (mm)	Length (inch)	Weight (kg) Stud Only	Weight (kg) Stud+2xNut
6B7SBNU?20420	3/4"	420	16 1/2"	0.78	0.96
6B7SBNU?20425	3/4"	425	16 3/4"	0.79	0.97
6B7SBNU?20430	3/4"	430	17"	0.80	0.98
6B7SBNU?20440	3/4"	440	17 1/4"	0.82	1.00
6B7SBNU?20445	3/4"	445	17 1/2"	0.83	1.01
6B7SBNU?20450	3/4"	450	17 3/4"	0.84	1.02
6B7SBNU?20455	3/4"	455	18"	0.85	1.03
6B7SBNU?20465	3/4"	465	18 1/4"	0.87	1.05
6B7SBNU?20470	3/4"	470	18 1/2"	0.88	1.06
6B7SBNU?20475	3/4"	475	18 3/4"	0.88	1.06
6B7SBNU?20485	3/4"	485	19"	0.90	1.08
6B7SBNU?20490	3/4"	490	19 1/4"	0.91	1.09
6B7SBNU?20495	3/4"	495	19 1/2"	0.92	1.10
6B7SBNU?20500	3/4"	500	19 3/4"	0.93	1.11
6B7SBNU?20510	3/4"	510	20"	0.95	1.13

? = finish/coating codes; see page 4

7/8" UNC
B7 / 2H Studbolt

ASTM B7 A193/A193M
2H A194/A194M



Product No.	Size	Length (mm)	Length (inch)	Weight (kg) Stud Only	Weight (kg) Stud+2xNut
6B7SBNU?22075	7/8"	75	3"	0.19	0.45
6B7SBNU?22080	7/8"	80	3 1/4"	0.20	0.46
6B7SBNU?22090	7/8"	90	3 1/2"	0.23	0.49
6B7SBNU?22095	7/8"	95	3 3/4"	0.24	0.50
6B7SBNU?22100	7/8"	100	4"	0.25	0.51
6B7SBNU?22110	7/8"	110	4 1/4"	0.28	0.54
6B7SBNU?22115	7/8"	115	4 1/2"	0.29	0.55
6B7SBNU?22120	7/8"	120	4 3/4"	0.30	0.56
6B7SBNU?22125	7/8"	125	5"	0.32	0.58
6B7SBNU?22130	7/8"	130	5 1/4"	0.33	0.59
6B7SBNU?22140	7/8"	140	5 1/2"	0.35	0.61
6B7SBNU?22145	7/8"	145	5 3/4"	0.37	0.63
6B7SBNU?22150	7/8"	150	6"	0.38	0.64
6B7SBNU?22160	7/8"	160	6 1/4"	0.40	0.66
6B7SBNU?22165	7/8"	165	6 1/2"	0.42	0.68
6B7SBNU?22170	7/8"	170	6 3/4"	0.43	0.69
6B7SBNU?22180	7/8"	180	7"	0.46	0.72
6B7SBNU?22185	7/8"	185	7 1/4"	0.47	0.73
6B7SBNU?22190	7/8"	190	7 1/2"	0.48	0.74
6B7SBNU?22195	7/8"	195	7 3/4"	0.49	0.75

7/8" UNC continued on page 12



STUDBOLT KIT
7/8" UNC

7/8" UNC
B7 / 2H Studbolt



7/8" UNC continued from page 11

Product No.	Size	Length (mm)	Length (inch)	Weight (kg) Stud Only	Weight (kg) Stud+2xNut
6B7SBNU?22200	7/8"	200	8"	0.51	0.77
6B7SBNU?22210	7/8"	210	8 1/4"	0.53	0.79
6B7SBNU?22215	7/8"	215	8 1/2"	0.54	0.80
6B7SBNU?22220	7/8"	220	8 3/4"	0.56	0.82
6B7SBNU?22230	7/8"	230	9"	0.58	0.84
6B7SBNU?22235	7/8"	235	9 1/4"	0.59	0.85
6B7SBNU?22240	7/8"	240	9 1/2"	0.61	0.87
6B7SBNU?22250	7/8"	250	9 3/4"	0.63	0.89
6B7SBNU?22255	7/8"	255	10"	0.64	0.90
6B7SBNU?22260	7/8"	260	10 1/4"	0.66	0.92
6B7SBNU?22265	7/8"	265	10 1/2"	0.67	0.93
6B7SBNU?22275	7/8"	275	10 3/4"	0.70	0.96
6B7SBNU?22280	7/8"	280	11"	0.71	0.97
6B7SBNU?22285	7/8"	285	11 1/4"	0.72	0.98
6B7SBNU?22290	7/8"	290	11 1/2"	0.73	0.99
6B7SBNU?22300	7/8"	300	11 3/4"	0.76	1.02
6B7SBNU?22305	7/8"	305	12"	0.77	1.03
6B7SBNU?22310	7/8"	310	12 1/4"	0.78	1.04
6B7SBNU?22320	7/8"	320	12 1/2"	0.81	1.07
6B7SBNU?22325	7/8"	325	12 3/4"	0.82	1.08
6B7SBNU?22330	7/8"	330	13"	0.83	1.09
6B7SBNU?22335	7/8"	335	13 1/4"	0.85	1.11
6B7SBNU?22345	7/8"	345	13 1/2"	0.87	1.13
6B7SBNU?22350	7/8"	350	13 3/4"	0.89	1.15
6B7SBNU?22355	7/8"	355	14"	0.90	1.16
6B7SBNU?22360	7/8"	360	14 1/4"	0.91	1.17
6B7SBNU?22370	7/8"	370	14 1/2"	0.94	1.20
6B7SBNU?22375	7/8"	375	14 3/4"	0.95	1.21
6B7SBNU?22380	7/8"	380	15"	0.96	1.22
6B7SBNU?22385	7/8"	385	15 1/4"	0.97	1.23
6B7SBNU?22395	7/8"	395	15 1/2"	1.00	1.26
6B7SBNU?22400	7/8"	400	15 3/4"	1.01	1.27
6B7SBNU?22405	7/8"	405	16"	1.02	1.28
6B7SBNU?22415	7/8"	415	16 1/4"	1.05	1.31
6B7SBNU?22420	7/8"	420	16 1/2"	1.06	1.32
6B7SBNU?22425	7/8"	425	16 3/4"	1.07	1.33
6B7SBNU?22430	7/8"	430	17"	1.09	1.35
6B7SBNU?22440	7/8"	440	17 1/4"	1.11	1.37
6B7SBNU?22445	7/8"	445	17 1/2"	1.13	1.39
6B7SBNU?22450	7/8"	450	17 3/4"	1.14	1.40
6B7SBNU?22455	7/8"	455	18"	1.15	1.41
6B7SBNU?22465	7/8"	465	18 1/4"	1.18	1.44



7/8" UNC
B7 / 2H Studbolt

Product No.	Size	Length (mm)	Length (inch)	Weight (kg) Stud Only	Weight (kg) Stud+2xNut
6B7SBNU?22470	7/8"	470	18 1/2"	1.19	1.45
6B7SBNU?22475	7/8"	475	18 3/4"	1.20	1.46
6B7SBNU?22485	7/8"	485	19"	1.23	1.49
6B7SBNU?22490	7/8"	490	19 1/4"	1.24	1.50
6B7SBNU?22495	7/8"	495	19 1/2"	1.25	1.51
6B7SBNU?22500	7/8"	500	19 3/4"	1.26	1.52
6B7SBNU?22510	7/8"	510	20"	1.29	1.55

? = finish/coating codes; see page 4



Product No.	Size	Length (mm)	Length (inch)	Weight (kg) Stud Only	Weight (kg) Stud+2xNut
6B7SBNU?25075	1"	75	3"	0.25	0.63
6B7SBNU?25080	1"	80	3 1/4"	0.27	0.65
6B7SBNU?25090	1"	90	3 1/2"	0.30	0.68
6B7SBNU?25095	1"	95	3 3/4"	0.32	0.70
6B7SBNU?25100	1"	100	4"	0.33	0.71
6B7SBNU?25110	1"	110	4 1/4"	0.37	0.75
6B7SBNU?25115	1"	115	4 1/2"	0.38	0.76
6B7SBNU?25120	1"	120	4 3/4"	0.40	0.78
6B7SBNU?25125	1"	125	5"	0.42	0.80
6B7SBNU?25130	1"	130	5 1/4"	0.43	0.81
6B7SBNU?25140	1"	140	5 1/2"	0.47	0.85
6B7SBNU?25145	1"	145	5 3/4"	0.48	0.86
6B7SBNU?25150	1"	150	6"	0.50	0.88
6B7SBNU?25160	1"	160	6 1/4"	0.53	0.91
6B7SBNU?25165	1"	165	6 1/2"	0.55	0.93
6B7SBNU?25170	1"	170	6 3/4"	0.57	0.95
6B7SBNU?25180	1"	180	7"	0.60	0.98
6B7SBNU?25185	1"	185	7 1/4"	0.62	1.00
6B7SBNU?25190	1"	190	7 1/2"	0.63	1.01
6B7SBNU?25195	1"	195	7 3/4"	0.65	1.03
6B7SBNU?25200	1"	200	8"	0.67	1.05
6B7SBNU?25210	1"	210	8 1/4"	0.70	1.08
6B7SBNU?25215	1"	215	8 1/2"	0.72	1.10
6B7SBNU?25220	1"	220	8 3/4"	0.73	1.11
6B7SBNU?25230	1"	230	9"	0.77	1.15
6B7SBNU?25235	1"	235	9 1/4"	0.78	1.16
6B7SBNU?25240	1"	240	9 1/2"	0.80	1.18
6B7SBNU?25250	1"	250	9 3/4"	0.83	1.21
6B7SBNU?25255	1"	255	10"	0.85	1.23

1" UNC continued on page 14



1" UNC
B7 / 2H Studbolt



B7 / B7M
Heavy Hex Bolts
see page 37



1" UNC continued from page 13

Product No.	Size	Length (mm)	Length (inch)	Weight (kg) Stud Only	Weight (kg) Stud+2xNut
6B7SBNU?25260	1"	260	10 1/4"	0.87	1.25
6B7SBNU?25265	1"	265	10 1/2"	0.88	1.26
6B7SBNU?25275	1"	275	10 3/4"	0.92	1.30
6B7SBNU?25280	1"	280	11"	0.93	1.31
6B7SBNU?25285	1"	285	11 1/4"	0.95	1.33
6B7SBNU?25290	1"	290	11 1/2"	0.97	1.35
6B7SBNU?25300	1"	300	11 3/4"	1.00	1.38
6B7SBNU?25305	1"	305	12"	1.02	1.40
6B7SBNU?25310	1"	310	12 1/4"	1.03	1.41
6B7SBNU?25320	1"	320	12 1/2"	1.07	1.45
6B7SBNU?25325	1"	325	12 3/4"	1.08	1.46
6B7SBNU?25330	1"	330	13"	1.10	1.48
6B7SBNU?25335	1"	335	13 1/4"	1.12	1.50
6B7SBNU?25345	1"	345	13 1/2"	1.15	1.53
6B7SBNU?25350	1"	350	13 3/4"	1.17	1.55
6B7SBNU?25355	1"	355	14"	1.18	1.56
6B7SBNU?25360	1"	360	14 1/4"	1.20	1.58
6B7SBNU?25370	1"	370	14 1/2"	1.23	1.61
6B7SBNU?25375	1"	375	14 3/4"	1.25	1.63
6B7SBNU?25380	1"	380	15"	1.27	1.65
6B7SBNU?25385	1"	385	15 1/4"	1.28	1.66
6B7SBNU?25395	1"	395	15 1/2"	1.32	1.70
6B7SBNU?25400	1"	400	15 3/4"	1.33	1.71
6B7SBNU?25405	1"	405	16"	1.35	1.73
6B7SBNU?25415	1"	415	16 1/4"	1.38	1.76
6B7SBNU?25420	1"	420	16 1/2"	1.40	1.78
6B7SBNU?25425	1"	425	16 3/4"	1.42	1.80
6B7SBNU?25430	1"	430	17"	1.43	1.81
6B7SBNU?25440	1"	440	17 1/4"	1.47	1.85
6B7SBNU?25445	1"	445	17 1/2"	1.48	1.86
6B7SBNU?25450	1"	450	17 3/4"	1.50	1.88
6B7SBNU?25455	1"	455	18"	1.52	1.90
6B7SBNU?25465	1"	465	18 1/4"	1.55	1.93
6B7SBNU?25470	1"	470	18 1/2"	1.57	1.95
6B7SBNU?25475	1"	475	18 3/4"	1.58	1.96
6B7SBNU?25485	1"	485	19"	1.62	2.00
6B7SBNU?25490	1"	490	19 1/4"	1.63	2.01
6B7SBNU?25495	1"	495	19 1/2"	1.65	2.03
6B7SBNU?25500	1"	500	19 3/4"	1.67	2.05
6B7SBNU?25510	1"	510	20"	1.70	2.08

? = finish/coating codes; see page 4



MADE TO ORDER

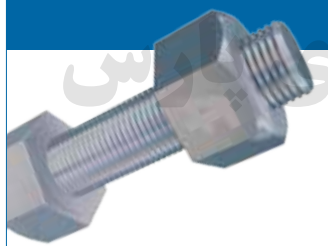
MAINTENANCE
EQUIPEMENT

FLANGE ALIGNMENT PINS
MADE FROM COUNTRY
OF ORIGIN APPROVED
MATERIALS



1 1/8" UN8 B7 / 2H Studbolt

ASTM B7 A193/A193M
2H A194/A194M



Product No.	Size	Length (mm)	Length (inch)	Weight (kg) Stud Only	Weight (kg) Stud+2xNut
6B7SBNU?28075	1 1/8"	75	3"	0.32	0.84
6B7SBNU?28080	1 1/8"	80	3 1/4"	0.34	0.86
6B7SBNU?28090	1 1/8"	90	3 1/2"	0.39	0.91
6B7SBNU?28095	1 1/8"	95	3 3/4"	0.41	0.93
6B7SBNU?28100	1 1/8"	100	4"	0.43	0.95
6B7SBNU?28110	1 1/8"	110	4 1/4"	0.47	0.99
6B7SBNU?28115	1 1/8"	115	4 1/2"	0.49	1.01
6B7SBNU?28120	1 1/8"	120	4 3/4"	0.52	1.04
6B7SBNU?28125	1 1/8"	125	5"	0.54	1.06
6B7SBNU?28130	1 1/8"	130	5 1/4"	0.56	1.08
6B7SBNU?28140	1 1/8"	140	5 1/2"	0.60	1.12
6B7SBNU?28145	1 1/8"	145	5 3/4"	0.62	1.14
6B7SBNU?28150	1 1/8"	150	6"	0.64	1.16
6B7SBNU?28160	1 1/8"	160	6 1/4"	0.69	1.21
6B7SBNU?28165	1 1/8"	165	6 1/2"	0.71	1.23
6B7SBNU?28170	1 1/8"	170	6 3/4"	0.73	1.25
6B7SBNU?28180	1 1/8"	180	7"	0.77	1.29
6B7SBNU?28185	1 1/8"	185	7 1/4"	0.79	1.31
6B7SBNU?28190	1 1/8"	190	7 1/2"	0.82	1.34
6B7SBNU?28195	1 1/8"	195	7 3/4"	0.84	1.36
6B7SBNU?28200	1 1/8"	200	8"	0.86	1.38
6B7SBNU?28210	1 1/8"	210	8 1/4"	0.90	1.42
6B7SBNU?28215	1 1/8"	215	8 1/2"	0.92	1.44
6B7SBNU?28220	1 1/8"	220	8 3/4"	0.94	1.46
6B7SBNU?28230	1 1/8"	230	9"	0.99	1.51
6B7SBNU?28235	1 1/8"	235	9 1/4"	1.01	1.53
6B7SBNU?28240	1 1/8"	240	9 1/2"	1.03	1.55
6B7SBNU?28250	1 1/8"	250	9 3/4"	1.07	1.59

1 1/8" UN8 continued on page 16



STUDBOLT KIT
1 1/8" UN8

1 1/8" UN8
B7 / 2H Studbolt



1 1/8" UN8 continued from page 15

Product No.	Size	Length (mm)	Length (inch)	Weight (kg) Stud Only	Weight (kg) Stud+2xNut
6B7SBNU?28255	1 1/8"	255	10"	1.09	1.61
6B7SBNU?28260	1 1/8"	260	10 1/4"	1.12	1.64
6B7SBNU?28265	1 1/8"	265	10 1/2"	1.14	1.66
6B7SBNU?28275	1 1/8"	275	10 3/4"	1.18	1.70
6B7SBNU?28280	1 1/8"	280	11"	1.20	1.72
6B7SBNU?28285	1 1/8"	285	11 1/4"	1.22	1.74
6B7SBNU?28290	1 1/8"	290	11 1/2"	1.25	1.77
6B7SBNU?28300	1 1/8"	300	11 3/4"	1.29	1.81
6B7SBNU?28305	1 1/8"	305	12"	1.31	1.83
6B7SBNU?28310	1 1/8"	310	12 1/4"	1.33	1.85
6B7SBNU?28320	1 1/8"	320	12 1/2"	1.37	1.89
6B7SBNU?28325	1 1/8"	325	12 3/4"	1.40	1.92
6B7SBNU?28330	1 1/8"	330	13"	1.42	1.94
6B7SBNU?28335	1 1/8"	335	13 1/4"	1.44	1.96
6B7SBNU?28345	1 1/8"	345	13 1/2"	1.48	2.00
6B7SBNU?28350	1 1/8"	350	13 3/4"	1.50	2.02
6B7SBNU?28355	1 1/8"	355	14"	1.52	2.04
6B7SBNU?28360	1 1/8"	360	14 1/4"	1.55	2.07
6B7SBNU?28370	1 1/8"	370	14 1/2"	1.59	2.11
6B7SBNU?28375	1 1/8"	375	14 3/4"	1.61	2.13
6B7SBNU?28380	1 1/8"	380	15"	1.63	2.15
6B7SBNU?28385	1 1/8"	385	15 1/4"	1.65	2.17
6B7SBNU?28395	1 1/8"	395	15 1/2"	1.70	2.22
6B7SBNU?28400	1 1/8"	400	15 3/4"	1.72	2.24
6B7SBNU?28405	1 1/8"	405	16"	1.74	2.26
6B7SBNU?28415	1 1/8"	415	16 1/4"	1.78	2.30
6B7SBNU?28420	1 1/8"	420	16 1/2"	1.80	2.32
6B7SBNU?28425	1 1/8"	425	16 3/4"	1.82	2.34
6B7SBNU?28430	1 1/8"	430	17"	1.85	2.37
6B7SBNU?28440	1 1/8"	440	17 1/4"	1.89	2.41
6B7SBNU?28445	1 1/8"	445	17 1/2"	1.91	2.43
6B7SBNU?28450	1 1/8"	450	17 3/4"	1.93	2.45
6B7SBNU?28455	1 1/8"	455	18"	1.95	2.47
6B7SBNU?28465	1 1/8"	465	18 1/4"	2.00	2.52
6B7SBNU?28470	1 1/8"	470	18 1/2"	2.02	2.54
6B7SBNU?28475	1 1/8"	475	18 3/4"	2.04	2.56
6B7SBNU?28485	1 1/8"	485	19"	2.08	2.60
6B7SBNU?28490	1 1/8"	490	19 1/4"	2.10	2.62
6B7SBNU?28495	1 1/8"	495	19 1/2"	2.13	2.65
6B7SBNU?28500	1 1/8"	500	19 3/4"	2.15	2.67
6B7SBNU?28510	1 1/8"	510	20"	2.19	2.71

? = finish/coating codes; see page 4



1 1/4" UN8
B7 / 2H Studbolt

ASTM B7 A193/A193M
2H A194/A194M

Product No.	Size	Length (mm)	Length (inch)	Weight (kg) Stud Only	Weight (kg) Stud+2xNut
6B7SBNU?32075	1 1/4"	75	3"	0.40	1.14
6B7SBNU?32080	1 1/4"	80	3 1/4"	0.43	1.17
6B7SBNU?32090	1 1/4"	90	3 1/2"	0.49	1.23
6B7SBNU?32095	1 1/4"	95	3 3/4"	0.51	1.25
6B7SBNU?32100	1 1/4"	100	4"	0.54	1.28
6B7SBNU?32110	1 1/4"	110	4 1/4"	0.59	1.33
6B7SBNU?32115	1 1/4"	115	4 1/2"	0.62	1.36
6B7SBNU?32120	1 1/4"	120	4 3/4"	0.65	1.39
6B7SBNU?32125	1 1/4"	125	5"	0.67	1.41
6B7SBNU?32130	1 1/4"	130	5 1/4"	0.70	1.44
6B7SBNU?32140	1 1/4"	140	5 1/2"	0.75	1.49
6B7SBNU?32145	1 1/4"	145	5 3/4"	0.78	1.52
6B7SBNU?32150	1 1/4"	150	6"	0.81	1.55
6B7SBNU?32160	1 1/4"	160	6 1/4"	0.86	1.60
6B7SBNU?32165	1 1/4"	165	6 1/2"	0.89	1.63
6B7SBNU?32170	1 1/4"	170	6 3/4"	0.92	1.66
6B7SBNU?32180	1 1/4"	180	7"	0.97	1.71
6B7SBNU?32185	1 1/4"	185	7 1/4"	1.00	1.74
6B7SBNU?32190	1 1/4"	190	7 1/2"	1.02	1.76
6B7SBNU?32195	1 1/4"	195	7 3/4"	1.05	1.79
6B7SBNU?32200	1 1/4"	200	8"	1.08	1.82
6B7SBNU?32210	1 1/4"	210	8 1/4"	1.13	1.87
6B7SBNU?32215	1 1/4"	215	8 1/2"	1.16	1.90
6B7SBNU?32220	1 1/4"	220	8 3/4"	1.19	1.93
6B7SBNU?32230	1 1/4"	230	9"	1.24	1.98
6B7SBNU?32235	1 1/4"	235	9 1/4"	1.27	2.01
6B7SBNU?32240	1 1/4"	240	9 1/2"	1.29	2.03
6B7SBNU?32250	1 1/4"	250	9 3/4"	1.35	2.09
6B7SBNU?32255	1 1/4"	255	10"	1.37	2.11
6B7SBNU?32260	1 1/4"	260	10 1/4"	1.40	2.14
6B7SBNU?32265	1 1/4"	265	10 1/2"	1.43	2.17
6B7SBNU?32275	1 1/4"	275	10 3/4"	1.48	2.22
6B7SBNU?32280	1 1/4"	280	11"	1.51	2.25
6B7SBNU?32285	1 1/4"	285	11 1/4"	1.54	2.28
6B7SBNU?32290	1 1/4"	290	11 1/2"	1.56	2.30
6B7SBNU?32300	1 1/4"	300	11 3/4"	1.62	2.36
6B7SBNU?32305	1 1/4"	305	12"	1.64	2.38
6B7SBNU?32310	1 1/4"	310	12 1/4"	1.67	2.41
6B7SBNU?32320	1 1/4"	320	12 1/2"	1.73	2.47
6B7SBNU?32325	1 1/4"	325	12 3/4"	1.75	2.49
6B7SBNU?32330	1 1/4"	330	13"	1.78	2.52

PICHG...TARAN.com
پارس

1 1/4" UN8 continued on page 18



STUDBOLT KIT
1 3/8" UN8

1 1/4" UN8
B7 / 2H Studbolt



1 1/4" UN8 continued from page 17

Product No.	Size	Length (mm)	Length (inch)	Weight (kg) Stud Only	Weight (kg) Stud+2xNut
6B7SBNU?32335	1 1/4"	335	13 1/4"	1.81	2.55
6B7SBNU?32345	1 1/4"	345	13 1/2"	1.86	2.60
6B7SBNU?32350	1 1/4"	350	13 3/4"	1.89	2.63
6B7SBNU?32355	1 1/4"	355	14"	1.91	2.65
6B7SBNU?32360	1 1/4"	360	14 1/4"	1.94	2.68
6B7SBNU?32370	1 1/4"	370	14 1/2"	2.00	2.74
6B7SBNU?32375	1 1/4"	375	14 3/4"	2.02	2.76
6B7SBNU?32380	1 1/4"	380	15"	2.05	2.79
6B7SBNU?32385	1 1/4"	385	15 1/4"	2.08	2.82
6B7SBNU?32395	1 1/4"	395	15 1/2"	2.13	2.87
6B7SBNU?32400	1 1/4"	400	15 3/4"	2.16	2.90
6B7SBNU?32405	1 1/4"	405	16"	2.18	2.92
6B7SBNU?32415	1 1/4"	415	16 1/4"	2.24	2.98
6B7SBNU?32420	1 1/4"	420	16 1/2"	2.26	3.00
6B7SBNU?32425	1 1/4"	425	16 3/4"	2.29	3.03
6B7SBNU?32430	1 1/4"	430	17"	2.32	3.06
6B7SBNU?32440	1 1/4"	440	17 1/4"	2.37	3.11
6B7SBNU?32445	1 1/4"	445	17 1/2"	2.40	3.14
6B7SBNU?32450	1 1/4"	450	17 3/4"	2.43	3.17
6B7SBNU?32455	1 1/4"	455	18"	2.45	3.19
6B7SBNU?32465	1 1/4"	465	18 1/4"	2.51	3.25
6B7SBNU?32470	1 1/4"	470	18 1/2"	2.53	3.27
6B7SBNU?32475	1 1/4"	475	18 3/4"	2.56	3.30
6B7SBNU?32485	1 1/4"	485	19"	2.62	3.36
6B7SBNU?32490	1 1/4"	490	19 1/4"	2.64	3.38
6B7SBNU?32495	1 1/4"	495	19 1/2"	2.67	3.41
6B7SBNU?32500	1 1/4"	500	19 3/4"	2.70	3.44
6B7SBNU?32510	1 1/4"	510	20"	2.75	3.49

? = finish/coating codes; see page 4

1 3/8" UN8
B7 / 2H Studbolt

ASTM B7 A193/A193M
2H A194/A194M



Product No.	Size	Length (mm)	Length (inch)	Weight (kg) Stud Only	Weight (kg) Stud+2xNut
6B7SBNU?35075	1 3/8"	75	3"	0.50	1.46
6B7SBNU?35080	1 3/8"	80	3 1/4"	0.53	1.49
6B7SBNU?35090	1 3/8"	90	3 1/2"	0.59	1.55
6B7SBNU?35095	1 3/8"	95	3 3/4"	0.63	1.59
6B7SBNU?35100	1 3/8"	100	4"	0.66	1.62
6B7SBNU?35110	1 3/8"	110	4 1/4"	0.73	1.69
6B7SBNU?35115	1 3/8"	115	4 1/2"	0.76	1.72
6B7SBNU?35120	1 3/8"	120	4 3/4"	0.79	1.75
6B7SBNU?35125	1 3/8"	125	5"	0.83	1.79
6B7SBNU?35130	1 3/8"	130	5 1/4"	0.86	1.82
6B7SBNU?35140	1 3/8"	140	5 1/2"	0.93	1.89



1 3/8" UN8
6B7 / 2H Studbolt



Coated Studbolts

Xylan Green
Xylan Blue
Zinc Plated
see page 3



Product No.	Size	Length (mm)	Length (inch)	Weight (kg) Stud Only	Weight (kg) Stud+2xNut
6B7SBNU?35145	1 3/8"	145	5 3/4"	0.96	1.92
6B7SBNU?35150	1 3/8"	150	6"	0.99	1.95
6B7SBNU?35160	1 3/8"	160	6 1/4"	1.06	2.02
6B7SBNU?35165	1 3/8"	165	6 1/2"	1.09	2.05
6B7SBNU?35170	1 3/8"	170	6 3/4"	1.12	2.08
6B7SBNU?35180	1 3/8"	180	7"	1.19	2.15
6B7SBNU?35185	1 3/8"	185	7 1/4"	1.22	2.18
6B7SBNU?35190	1 3/8"	190	7 1/2"	1.26	2.22
6B7SBNU?35195	1 3/8"	195	7 3/4"	1.29	2.25
6B7SBNU?35200	1 3/8"	200	8"	1.32	2.28
6B7SBNU?35210	1 3/8"	210	8 1/4"	1.39	2.35
6B7SBNU?35215	1 3/8"	215	8 1/2"	1.42	2.38
6B7SBNU?35220	1 3/8"	220	8 3/4"	1.45	2.41
6B7SBNU?35230	1 3/8"	230	9"	1.52	2.48
6B7SBNU?35235	1 3/8"	235	9 1/4"	1.55	2.51
6B7SBNU?35240	1 3/8"	240	9 1/2"	1.59	2.55
6B7SBNU?35250	1 3/8"	250	9 3/4"	1.65	2.61
6B7SBNU?35255	1 3/8"	255	10"	1.68	2.64
6B7SBNU?35260	1 3/8"	260	10 1/4"	1.72	2.68
6B7SBNU?35265	1 3/8"	265	10 1/2"	1.75	2.71
6B7SBNU?35275	1 3/8"	275	10 3/4"	1.82	2.78
6B7SBNU?35280	1 3/8"	280	11"	1.85	2.81
6B7SBNU?35285	1 3/8"	285	11 1/4"	1.88	2.84
6B7SBNU?35290	1 3/8"	290	11 1/2"	1.92	2.88
6B7SBNU?35300	1 3/8"	300	11 3/4"	1.98	2.94
6B7SBNU?35305	1 3/8"	305	12"	2.02	2.98
6B7SBNU?35310	1 3/8"	310	12 1/4"	2.05	3.01
6B7SBNU?35320	1 3/8"	320	12 1/2"	2.11	3.07
6B7SBNU?35325	1 3/8"	325	12 3/4"	2.15	3.11
6B7SBNU?35330	1 3/8"	330	13"	2.18	3.14
6B7SBNU?35335	1 3/8"	335	13 1/4"	2.21	3.17
6B7SBNU?35345	1 3/8"	345	13 1/2"	2.28	3.24
6B7SBNU?35350	1 3/8"	350	13 3/4"	2.31	3.27
6B7SBNU?35355	1 3/8"	355	14"	2.35	3.31
6B7SBNU?35360	1 3/8"	360	14 1/4"	2.38	3.34
6B7SBNU?35370	1 3/8"	370	14 1/2"	2.44	3.40
6B7SBNU?35375	1 3/8"	375	14 3/4"	2.48	3.44
6B7SBNU?35380	1 3/8"	380	15"	2.51	3.47
6B7SBNU?35385	1 3/8"	385	15 1/4"	2.54	3.50
6B7SBNU?35395	1 3/8"	395	15 1/2"	2.61	3.57
6B7SBNU?35400	1 3/8"	400	15 3/4"	2.64	3.60

1 3/8" UN8 continued on page 20



STUDBOLT KIT
1 1/2" UN8

1 3/8" UN8
B7 / 2H Studbolt



1 3/8" UN8 continued from page 19

Product No.	Size	Length (mm)	Length (inch)	Weight (kg) Stud Only	Weight (kg) Stud+2xNut
6B7SBNU?35405	1 3/8"	405	16"	2.68	3.64
6B7SBNU?35415	1 3/8"	415	16 1/4"	2.74	3.70
6B7SBNU?35420	1 3/8"	420	16 1/2"	2.78	3.74
6B7SBNU?35425	1 3/8"	425	16 3/4"	2.81	3.77
6B7SBNU?35430	1 3/8"	430	17"	2.84	3.80
6B7SBNU?35440	1 3/8"	440	17 1/4"	2.91	3.87
6B7SBNU?35445	1 3/8"	445	17 1/2"	2.94	3.90
6B7SBNU?35450	1 3/8"	450	17 3/4"	2.97	3.93
6B7SBNU?35455	1 3/8"	455	18"	3.01	3.97
6B7SBNU?35465	1 3/8"	465	18 1/4"	3.07	4.03
6B7SBNU?35470	1 3/8"	470	18 1/2"	3.11	4.07
6B7SBNU?35475	1 3/8"	475	18 3/4"	3.14	4.10
6B7SBNU?35485	1 3/8"	485	19"	3.20	4.16
6B7SBNU?35490	1 3/8"	490	19 1/4"	3.24	4.20
6B7SBNU?35495	1 3/8"	495	19 1/2"	3.27	4.23
6B7SBNU?35500	1 3/8"	500	19 3/4"	3.30	4.26
6B7SBNU?35510	1 3/8"	510	20"	3.37	4.33

? = finish/coating codes; see page 4

1 1/2" UN8
B7 / 2H Studbolt

ASTM B7 A193/A193M
2H A194/A194M



Product No.	Size	Length (mm)	Length (inch)	Weight (kg) Stud Only	Weight (kg) Stud+2xNut
6B7SBNU?38100	1 1/2"	100	4"	0.80	1.96
6B7SBNU?38110	1 1/2"	110	4 1/4"	0.88	2.04
6B7SBNU?38115	1 1/2"	115	4 1/2"	0.92	2.08
6B7SBNU?38120	1 1/2"	120	4 3/4"	0.96	2.12
6B7SBNU?38125	1 1/2"	125	5"	1.00	2.16
6B7SBNU?38130	1 1/2"	130	5 1/4"	1.03	2.19
6B7SBNU?38140	1 1/2"	140	5 1/2"	1.11	2.27
6B7SBNU?38145	1 1/2"	145	5 3/4"	1.15	2.31
6B7SBNU?38150	1 1/2"	150	6"	1.19	2.35
6B7SBNU?38160	1 1/2"	160	6 1/4"	1.27	2.43
6B7SBNU?38165	1 1/2"	165	6 1/2"	1.31	2.47
6B7SBNU?38170	1 1/2"	170	6 3/4"	1.35	2.51
6B7SBNU?38180	1 1/2"	180	7"	1.43	2.59
6B7SBNU?38185	1 1/2"	185	7 1/4"	1.47	2.63
6B7SBNU?38190	1 1/2"	190	7 1/2"	1.51	2.67
6B7SBNU?38195	1 1/2"	195	7 3/4"	1.55	2.71
6B7SBNU?38200	1 1/2"	200	8"	1.59	2.75
6B7SBNU?38210	1 1/2"	210	8 1/4"	1.67	2.83
6B7SBNU?38215	1 1/2"	215	8 1/2"	1.71	2.87
6B7SBNU?38220	1 1/2"	220	8 3/4"	1.75	2.91



1 1/2" UN8
B7 / 2H Studbolt



Product No.	Size	Length (mm)	Length (inch)	Weight (kg) Stud Only	Weight (kg) Stud+2xNut
6B7SBNU?38230	1 1/2"	230	9"	1.83	2.99
6B7SBNU?38235	1 1/2"	235	9 1/4"	1.87	3.03
6B7SBNU?38240	1 1/2"	240	9 1/2"	1.91	3.07
6B7SBNU?38250	1 1/2"	250	9 3/4"	1.99	3.15
6B7SBNU?38255	1 1/2"	255	10"	2.03	3.19
6B7SBNU?38260	1 1/2"	260	10 1/4"	2.07	3.23
6B7SBNU?38265	1 1/2"	265	10 1/2"	2.11	3.27
6B7SBNU?38275	1 1/2"	275	10 3/4"	2.19	3.35
6B7SBNU?38280	1 1/2"	280	11"	2.23	3.39
6B7SBNU?38285	1 1/2"	285	11 1/4"	2.27	3.43
6B7SBNU?38290	1 1/2"	290	11 1/2"	2.31	3.47
6B7SBNU?38300	1 1/2"	300	11 3/4"	2.39	3.55
6B7SBNU?38305	1 1/2"	305	12"	2.43	3.59
6B7SBNU?38310	1 1/2"	310	12 1/4"	2.47	3.63
6B7SBNU?38320	1 1/2"	320	12 1/2"	2.55	3.71
6B7SBNU?38325	1 1/2"	325	12 3/4"	2.59	3.75
6B7SBNU?38330	1 1/2"	330	13"	2.63	3.79
6B7SBNU?38335	1 1/2"	335	13 1/4"	2.67	3.83
6B7SBNU?38345	1 1/2"	345	13 1/2"	2.75	3.91
6B7SBNU?38350	1 1/2"	350	13 3/4"	2.79	3.95
6B7SBNU?38355	1 1/2"	355	14"	2.83	3.99
6B7SBNU?38360	1 1/2"	360	14 1/4"	2.87	4.03
6B7SBNU?38370	1 1/2"	370	14 1/2"	2.95	4.11
6B7SBNU?38375	1 1/2"	375	14 3/4"	2.99	4.15
6B7SBNU?38380	1 1/2"	380	15"	3.03	4.19
6B7SBNU?38385	1 1/2"	385	15 1/4"	3.06	4.22
6B7SBNU?38395	1 1/2"	395	15 1/2"	3.14	4.30
6B7SBNU?38400	1 1/2"	400	15 3/4"	3.18	4.34
6B7SBNU?38405	1 1/2"	405	16"	3.22	4.38
6B7SBNU?38415	1 1/2"	415	16 1/4"	3.30	4.46
6B7SBNU?38420	1 1/2"	420	16 1/2"	3.34	4.50
6B7SBNU?38425	1 1/2"	425	16 3/4"	3.38	4.54
6B7SBNU?38430	1 1/2"	430	17"	3.42	4.58
6B7SBNU?38440	1 1/2"	440	17 1/4"	3.50	4.66
6B7SBNU?38445	1 1/2"	445	17 1/2"	3.54	4.70
6B7SBNU?38450	1 1/2"	450	17 3/4"	3.58	4.74
6B7SBNU?38455	1 1/2"	455	18"	3.62	4.78
6B7SBNU?38465	1 1/2"	465	18 1/4"	3.70	4.86
6B7SBNU?38470	1 1/2"	470	18 1/2"	3.74	4.90
6B7SBNU?38475	1 1/2"	475	18 3/4"	3.78	4.94



see page 3 for PLATING & COATINGS

1 1/2" UN8 continued on page 22



STUDBOLT KIT
1 5/8" UN8

1 1/2" UN8 *continued from page 21*

1 1/2" UN8
B7 / 2H Studbolt

Product No.	Size	Length (mm)	Length (inch)	Weight (kg) Stud Only	Weight (kg) Stud+2xNut
6B7SBNU?38485	1 1/2"	485	19"	3.86	5.02
6B7SBNU?38490	1 1/2"	490	19 1/4"	3.90	5.06
6B7SBNU?38495	1 1/2"	495	19 1/2"	3.94	5.10
6B7SBNU?38500	1 1/2"	500	19 3/4"	3.98	5.14
6B7SBNU?38510	1 1/2"	510	20"	4.06	5.22

? = finish/coating codes; see page 4

1 5/8" UN8
B7 / 2H Studbolt

ASTM B7 A193/A193M
2H A194/A194M



Product No.	Size	Length (mm)	Length (inch)	Weight (kg) Stud Only	Weight (kg) Stud+2xNut
6B7SBNU?40150	1 5/8"	150	6"	1.41	2.97
6B7SBNU?40160	1 5/8"	160	6 1/4"	1.51	3.07
6B7SBNU?40165	1 5/8"	165	6 1/2"	1.55	3.11
6B7SBNU?40170	1 5/8"	170	6 3/4"	1.60	3.16
6B7SBNU?40180	1 5/8"	180	7"	1.70	3.26
6B7SBNU?40185	1 5/8"	185	7 1/4"	1.74	3.30
6B7SBNU?40190	1 5/8"	190	7 1/2"	1.79	3.35
6B7SBNU?40195	1 5/8"	195	7 3/4"	1.84	3.40
6B7SBNU?40200	1 5/8"	200	8"	1.88	3.44
6B7SBNU?40210	1 5/8"	210	8 1/4"	1.98	3.54
6B7SBNU?40215	1 5/8"	215	8 1/2"	2.02	3.58
6B7SBNU?40220	1 5/8"	220	8 3/4"	2.07	3.63
6B7SBNU?40230	1 5/8"	230	9"	2.17	3.73
6B7SBNU?40235	1 5/8"	235	9 1/4"	2.21	3.77
6B7SBNU?40240	1 5/8"	240	9 1/2"	2.26	3.82
6B7SBNU?40250	1 5/8"	250	9 3/4"	2.35	3.91
6B7SBNU?40255	1 5/8"	255	10"	2.40	3.96
6B7SBNU?40260	1 5/8"	260	10 1/4"	2.45	4.01
6B7SBNU?40265	1 5/8"	265	10 1/2"	2.50	4.06
6B7SBNU?40275	1 5/8"	275	10 3/4"	2.59	4.15
6B7SBNU?40280	1 5/8"	280	11"	2.64	4.20
6B7SBNU?40285	1 5/8"	285	11 1/4"	2.68	4.24
6B7SBNU?40290	1 5/8"	290	11 1/2"	2.73	4.29
6B7SBNU?40300	1 5/8"	300	11 3/4"	2.83	4.39
6B7SBNU?40305	1 5/8"	305	12"	2.87	4.43
6B7SBNU?40310	1 5/8"	310	12 1/4"	2.92	4.48
6B7SBNU?40320	1 5/8"	320	12 1/2"	3.01	4.57
6B7SBNU?40325	1 5/8"	325	12 3/4"	3.06	4.62
6B7SBNU?40330	1 5/8"	330	13"	3.11	4.67
6B7SBNU?40335	1 5/8"	335	13 1/4"	3.15	4.71
6B7SBNU?40345	1 5/8"	345	13 1/2"	3.25	4.81
6B7SBNU?40350	1 5/8"	350	13 3/4"	3.30	4.86



1 5/8" UN8
B7 / 2H Studbolt



Product No.	Size	Length (mm)	Length (inch)	Weight (kg) Stud Only	Weight (kg) Stud+2xNut
6B7SBNU?40355	1 5/8"	355	14"	3.34	4.90
6B7SBNU?40360	1 5/8"	360	14 1/4"	3.39	4.95
6B7SBNU?40370	1 5/8"	370	14 1/2"	3.48	5.04
6B7SBNU?40375	1 5/8"	375	14 3/4"	3.53	5.09
6B7SBNU?40380	1 5/8"	380	15"	3.58	5.14
6B7SBNU?40385	1 5/8"	385	15 1/4"	3.63	5.19
6B7SBNU?40395	1 5/8"	395	15 1/2"	3.72	5.28
6B7SBNU?40400	1 5/8"	400	15 3/4"	3.77	5.33
6B7SBNU?40405	1 5/8"	405	16"	3.81	5.37
6B7SBNU?40415	1 5/8"	415	16 1/4"	3.91	5.47
6B7SBNU?40420	1 5/8"	420	16 1/2"	3.96	5.52
6B7SBNU?40425	1 5/8"	425	16 3/4"	4.00	5.56
6B7SBNU?40430	1 5/8"	430	17"	4.05	5.61
6B7SBNU?40440	1 5/8"	440	17 1/4"	4.14	5.70
6B7SBNU?40445	1 5/8"	445	17 1/2"	4.19	5.75
6B7SBNU?40450	1 5/8"	450	17 3/4"	4.24	5.80
6B7SBNU?40455	1 5/8"	455	18"	4.29	5.85
6B7SBNU?40465	1 5/8"	465	18 1/4"	4.38	5.94
6B7SBNU?40470	1 5/8"	470	18 1/2"	4.43	5.99
6B7SBNU?40475	1 5/8"	475	18 3/4"	4.47	6.03
6B7SBNU?40485	1 5/8"	485	19"	4.57	6.13
6B7SBNU?40490	1 5/8"	490	19 1/4"	4.61	6.17
6B7SBNU?40495	1 5/8"	495	19 1/2"	4.66	6.22
6B7SBNU?40500	1 5/8"	500	19 3/4"	4.71	6.27
6B7SBNU?40510	1 5/8"	510	20"	4.80	6.36

? = finish/coating codes; see page 4

1 3/4" UN8
B7 / 2H Studbolt

ASTM B7 A193/A193M
2H A194/A194M



Product No.	Size	Length (mm)	Length (inch)	Weight (kg) Stud Only	Weight (kg) Stud+2xNut
6B7SBNU?45150	1 3/4"	150	6"	1.65	3.57
6B7SBNU?45160	1 3/4"	160	6 1/4"	1.76	3.68
6B7SBNU?45165	1 3/4"	165	6 1/2"	1.82	3.74
6B7SBNU?45170	1 3/4"	170	6 3/4"	1.87	3.79
6B7SBNU?45180	1 3/4"	180	7"	1.98	3.90
6B7SBNU?45185	1 3/4"	185	7 1/4"	2.04	3.96
6B7SBNU?45190	1 3/4"	190	7 1/2"	2.09	4.01
6B7SBNU?45195	1 3/4"	195	7 3/4"	2.15	4.07
6B7SBNU?45200	1 3/4"	200	8"	2.20	4.12
6B7SBNU?45210	1 3/4"	210	8 1/4"	2.31	4.23
6B7SBNU?45215	1 3/4"	215	8 1/2"	2.37	4.29

1 3/4" UN8 continued on page 24



1 3/4" UN8
B7 / 2H Studbolt



1 3/4" UN8 continued from page 23

Product No.	Size	Length (mm)	Length (inch)	Weight (kg) Stud Only	Weight (kg) Stud+2xNut
6B7SBNU?45220	1 3/4"	220	8 3/4"	2.42	4.34
6B7SBNU?45230	1 3/4"	230	9"	2.53	4.45
6B7SBNU?45235	1 3/4"	235	9 1/4"	2.59	4.51
6B7SBNU?45240	1 3/4"	240	9 1/2"	2.64	4.56
6B7SBNU?45250	1 3/4"	250	9 3/4"	2.75	4.67
6B7SBNU?45255	1 3/4"	255	10"	2.81	4.73
6B7SBNU?45260	1 3/4"	260	10 1/4"	2.87	4.79
6B7SBNU?45265	1 3/4"	265	10 1/2"	2.92	4.84
6B7SBNU?45275	1 3/4"	275	10 3/4"	3.03	4.95
6B7SBNU?45280	1 3/4"	280	11"	3.09	5.01
6B7SBNU?45285	1 3/4"	285	11 1/4"	3.14	5.06
6B7SBNU?45290	1 3/4"	290	11 1/2"	3.20	5.12
6B7SBNU?45300	1 3/4"	300	11 3/4"	3.31	5.23
6B7SBNU?45305	1 3/4"	305	12"	3.36	5.28
6B7SBNU?45310	1 3/4"	310	12 1/4"	3.42	5.34
6B7SBNU?45320	1 3/4"	320	12 1/2"	3.53	5.45
6B7SBNU?45325	1 3/4"	325	12 3/4"	3.58	5.50
6B7SBNU?45330	1 3/4"	330	13"	3.64	5.56
6B7SBNU?45335	1 3/4"	335	13 1/4"	3.69	5.61
6B7SBNU?45345	1 3/4"	345	13 1/2"	3.80	5.72
6B7SBNU?45350	1 3/4"	350	13 3/4"	3.86	5.78
6B7SBNU?45355	1 3/4"	355	14"	3.91	5.83
6B7SBNU?45360	1 3/4"	360	14 1/4"	3.97	5.89
6B7SBNU?45370	1 3/4"	370	14 1/2"	4.08	6.00
6B7SBNU?45375	1 3/4"	375	14 3/4"	4.13	6.05
6B7SBNU?45380	1 3/4"	380	15"	4.19	6.11
6B7SBNU?45385	1 3/4"	385	15 1/4"	4.24	6.16
6B7SBNU?45395	1 3/4"	395	15 1/2"	4.35	6.27
6B7SBNU?45400	1 3/4"	400	15 3/4"	4.41	6.33
6B7SBNU?45405	1 3/4"	405	16"	4.46	6.38
6B7SBNU?45415	1 3/4"	415	16 1/4"	4.57	6.49
6B7SBNU?45420	1 3/4"	420	16 1/2"	4.63	6.55
6B7SBNU?45425	1 3/4"	425	16 3/4"	4.68	6.60
6B7SBNU?45430	1 3/4"	430	17"	4.74	6.66
6B7SBNU?45440	1 3/4"	440	17 1/4"	4.85	6.77
6B7SBNU?45445	1 3/4"	445	17 1/2"	4.90	6.82
6B7SBNU?45450	1 3/4"	450	17 3/4"	4.96	6.88
6B7SBNU?45455	1 3/4"	455	18"	5.01	6.93
6B7SBNU?45465	1 3/4"	465	18 1/4"	5.12	7.04
6B7SBNU?45470	1 3/4"	470	18 1/2"	5.18	7.10
6B7SBNU?45475	1 3/4"	475	18 3/4"	5.23	7.15



1 3/4" UN8
B7 / 2H Studbolt

Product No.	Size	Length (mm)	Length (inch)	Weight (kg) Stud Only	Weight (kg) Stud+2xNut
6B7SBNU?45485	1 3/4"	485	19"	5.34	7.26
6B7SBNU?45490	1 3/4"	490	19 1/4"	5.40	7.32
6B7SBNU?45495	1 3/4"	495	19 1/2"	5.45	7.37
6B7SBNU?45500	1 3/4"	500	19 3/4"	5.51	7.43
6B7SBNU?45510	1 3/4"	510	20"	5.62	7.54

? = finish/coating codes; see page 4

1 7/8" UN8
B7 / 2H Studbolt

ASTM B7 A193/A193M
2H A194/A194M



Product No.	Size	Length (mm)	Length (inch)	Weight (kg) Stud Only	Weight (kg) Stud+2xNut
6B7SBNU?48355	1 7/8"	355	14"	4.51	6.83
6B7SBNU?48360	1 7/8"	360	14 1/4"	4.57	6.89
6B7SBNU?48370	1 7/8"	370	14 1/2"	4.70	7.02
6B7SBNU?48375	1 7/8"	375	14 3/4"	4.76	7.08
6B7SBNU?48380	1 7/8"	380	15"	4.83	7.15
6B7SBNU?48385	1 7/8"	385	15 1/4"	4.89	7.21
6B7SBNU?48395	1 7/8"	395	15 1/2"	5.02	7.34
6B7SBNU?48400	1 7/8"	400	15 3/4"	5.08	7.40
6B7SBNU?48405	1 7/8"	405	16"	5.15	7.47
6B7SBNU?48415	1 7/8"	415	16 1/4"	5.27	7.59
6B7SBNU?48420	1 7/8"	420	16 1/2"	5.34	7.66
6B7SBNU?48425	1 7/8"	425	16 3/4"	5.40	7.72
6B7SBNU?48430	1 7/8"	430	17"	5.46	7.78
6B7SBNU?48440	1 7/8"	440	17 1/4"	5.59	7.91
6B7SBNU?48445	1 7/8"	445	17 1/2"	5.65	7.97
6B7SBNU?48450	1 7/8"	450	17 3/4"	5.72	8.04
6B7SBNU?48455	1 7/8"	455	18"	5.78	8.10
6B7SBNU?48465	1 7/8"	465	18 1/4"	5.91	8.23
6B7SBNU?48470	1 7/8"	470	18 1/2"	5.97	8.29
6B7SBNU?48475	1 7/8"	475	18 3/4"	6.03	8.35
6B7SBNU?48485	1 7/8"	485	19"	6.16	8.48
6B7SBNU?48490	1 7/8"	490	19 1/4"	6.23	8.55
6B7SBNU?48495	1 7/8"	495	19 1/2"	6.29	8.61
6B7SBNU?48500	1 7/8"	500	19 3/4"	6.35	8.67
6B7SBNU?48510	1 7/8"	510	20"	6.48	8.80

? = finish/coating codes; see page 4



Product No.	Size	Length (mm)	Length (inch)	Weight (kg) Stud Only	Weight (kg) Stud+2xNut
6B7SBNU?50355	2"	355	14"	5.17	7.97
6B7SBNU?50360	2"	360	14 1/4"	5.24	8.04
6B7SBNU?50370	2"	370	14 1/2"	5.39	8.19
6B7SBNU?50375	2"	375	14 3/4"	5.46	8.26
6B7SBNU?50380	2"	380	15"	5.54	8.34
6B7SBNU?50385	2"	385	15 1/4"	5.61	8.41
6B7SBNU?50395	2"	395	15 1/2"	5.75	8.55
6B7SBNU?50400	2"	400	15 3/4"	5.83	8.63
6B7SBNU?50405	2"	405	16"	5.90	8.70
6B7SBNU?50415	2"	415	16 1/4"	6.05	8.85
6B7SBNU?50420	2"	420	16 1/2"	6.12	8.92
6B7SBNU?50425	2"	425	16 3/4"	6.19	8.99
6B7SBNU?50430	2"	430	17"	6.26	9.06
6B7SBNU?50440	2"	440	17 1/4"	6.41	9.21
6B7SBNU?50445	2"	445	17 1/2"	6.48	9.28
6B7SBNU?50450	2"	450	17 3/4"	6.56	9.36
6B7SBNU?50455	2"	455	18"	6.63	9.43
6B7SBNU?50465	2"	465	18 1/4"	6.77	9.57
6B7SBNU?50470	2"	470	18 1/2"	6.85	9.65
6B7SBNU?50475	2"	475	18 3/4"	6.92	9.72
6B7SBNU?50485	2"	485	19"	7.07	9.87
6B7SBNU?50490	2"	490	19 1/4"	7.14	9.94
6B7SBNU?50495	2"	495	19 1/2"	7.21	10.01
6B7SBNU?50500	2"	500	19 3/4"	7.28	10.08
6B7SBNU?50510	2"	510	20"	7.43	10.23

? = finish/coating codes; see page 4

Studbolts kits can be supplied in various material grades as shown below.

L7 & L7M - A320 / A320M

B16 - A193 / A193M

B5 - A193 / A193M

B6 - A193 / A193M

B8 Class 1 & 2 - A193 / A193M

B8M Class 1 & 2 - A193 / A193M

B8T - A193 / A193M



SUPPLYING INDUSTRY WITH ASTM MANUFACTURED FASTENERS

TM

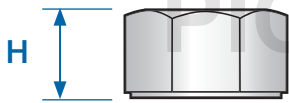
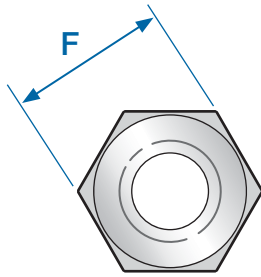
SERVICE | SOLUTIONS | SUPPLY
FOR ALL YOUR FASTENING NEEDS



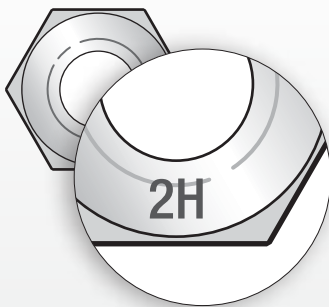
DIMENSIONS

ASTM A194 / A194M

GRADE 2H, 4, 7, 8, 8M



Thread diameter to fit:	Dimension F		Dimension H		Nut Wgt (kg)
	Min. (inch")	Max. (inch")	Min. (inch")	Max. (inch")	
1/4"	0.488	0.500	0.218	0.250	0.01
5/16"	0.546	0.562	0.280	0.314	0.01
3/8"	0.669	0.688	0.341	0.377	0.01
7/16"	0.728	0.750	0.403	0.441	0.02
1/2"	0.850	0.875	0.464	0.504	0.03
9/16"	0.909	0.938	0.526	0.568	0.04
5/8"	1.031	1.062	0.587	0.631	0.05
3/4"	1.212	1.250	0.710	0.758	0.09
7/8"	1.394	1.438	0.833	0.885	0.13
1"	1.575	1.625	0.956	1.012	0.19
1 1/8"	1.756	1.812	1.079	1.139	0.26
1 1/4"	1.938	2.000	1.187	1.251	0.37
1 3/8"	2.119	2.188	1.310	1.378	0.48
1 1/2"	2.300	2.375	1.433	1.505	0.58
1 5/8"	2.481	2.562	1.556	1.632	0.78
1 3/4"	2.662	2.750	1.679	1.759	0.96
1 7/8"	2.844	2.938	1.802	1.866	1.16
2"	3.025	3.125	1.925	2.013	1.40
2 1/4"	3.388	3.500	2.155	2.251	1.90
2 1/2"	3.750	3.875	2.401	2.505	2.56
2 3/4"	4.112	4.250	2.647	2.750	3.35
3"	4.475	4.625	2.893	3.013	4.32



GRADE SYMBOL MARKING OF HEAVY HEX NUTS

These grades shall be uniformly reheated to proper austenitizing temperatures and be liquid quenched and tempered under substantially uniform conditions.

The H and M indicate heat-treated nuts.

An underline as a marking requirement for grades 2HM and 7M has been removed but is permitted.

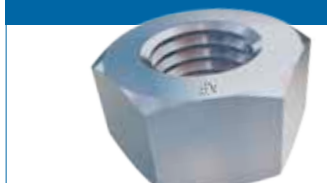
*Manufactured in Accordance with 6.6 Nuts shall subsequently be carbide-solution treated by heating them for a sufficient time at a temperature to dissolve chromium carbides followed by cooling at a rate sufficient to prevent reprecipitation of the carbides.

Grade & Type	Hot-forged or cold-punched	Machined from Bar Stock	see *
2H	2H	2HB	-
2HM	2HM	2HMB	-
3	3	3B	-
4	4	4B	-
6	6	6	-
7	7	7B	-
7M	7M	7M	-
8	8	8B	-
8C	8C	8CB	-
8M	8M	8MB	8MA
8T	8T	8TB	-



**Gr 2H
UNC**

CARBON STEEL
ASTM A194/A194M



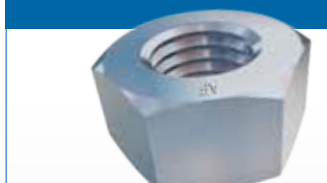
Product No.	Size	Thread (TPI)	Nut Wgt (kg)	Hardness (HRC)	Stress Area (inch ²)	Proof Load (lbf)
6NHIU?006	1/4"	20	0.01	24 -35	0.0316	5570
6NHIU?008	5/16"	18	0.01	24-35	0.0524	9170
6NHIU?010	3/8"	16	0.01	24-35	0.0774	13560
6NHIU?011	7/16"	14	0.02	24-35	0.1063	18600
6NHIU?012	1/2"	13	0.03	24-35	0.1419	24830
6NHIU?014	9/16"	12	0.04	24-35	0.1820	31850
6NHIU?016	5/8"	11	0.05	24-35	0.2260	39550
6NHIU?020	3/4"	10	0.09	24-35	0.3340	58450
6NHIU?022	7/8"	9	0.13	24-35	0.4620	80850
6NHIU?025	1"	8	0.19	24-35	0.6060	106000
6NHIU?028	1 1/8"	7	0.26	24-35	0.7900	138200
6NHIU?032	1 1/4"	7	0.37	24-35	1.0000	175000
6NHIU?038	1 1/2"	6	0.58	24-35	1.4920	261100
6NHIU?045	1 3/4"	5	0.96	35 max	2.0800	364000
6NHIU?050	2"	4.5	1.40	35 max	2.7700	484800

? = finish/coating codes; see page 4

Based on proof stress of 175,000 psi

**Gr 2H
UN8**

CARBON STEEL
ASTM A194/A194M



Product No.	Size	Thread (TPI)	Nut Wgt (kg)	Hardness (HRC)	Stress Area (inch ²)	Proof Load (lbf)
6NHIU?028	1 1/8"	8	0.26	24-35	0.790	138200
6NHIU?032	1 1/4"	8	0.37	24-35	1.000	175000
6NHIU?035	1 3/8"	8	0.48	24-35	1.233	215800
6NHIU?038	1 1/2"	8	0.58	24-35	1.492	261100
6NHIU?040	1 5/8"	8	0.78	35 max	1.780	311500
6NHIU?045	1 3/4"	8	0.96	35 max	2.080	364000
6NHIU?048	1 7/8"	8	1.16	35 max	2.410	421800
6NHIU?050	2"	8	1.40	35 max	2.770	484800
6NHIU?057	2 1/4"	8	1.90	35 max	3.560	623000
6NHIU?065	2 1/2"	8	2.56	35 max	4.440	777000
6NHIU?072	2 3/4"	8	3.35	35 max	5.430	950250
6NHIU?075	3"	8	4.32	35 max	-	na
6NHIU?090	3 1/2"	8	6.94	35 max	-	na
6NHIU?100	4"	8	9.91	35 max	-	na

? = finish/coating codes; see page 4

Based on proof stress of 175,000 psi



HEAVY HEX NUTS

GRADE 2H & 2HM

ASTM A194, A194M

Gr 2H Metric

CARBON STEEL ASTM
A194/A194M (AF=DIN934,
HEIGHT=DIAMETER)



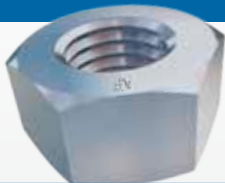
Product No.	Size	Thread (Pitch)	Nut Wgt (kg)	Hardness (HRC)	Stress Area (mm ²)	Proof Load (kN)
6NHIC?006	M6	1.00	0.01	24 -35	20.1	29.2
6NHIC?008	M8	1.25	0.01	24 -35	36.6	44.1
6NHIC?010	M10	1.50	0.01	24 -35	58.0	69.9
6NHIC?012	M12	1.75	0.02	24 -35	84.3	101.6
6NHIC?014	M14	2.00	0.03	24 -35	115.0	138.6
6NHIC?016	M16	2.00	0.04	24 -35	157.0	189.2
6NHIC?018	M18	2.50	0.06	24 -35	-	-
6NHIC?020	M20	2.50	0.09	24 -35	245.0	295.2
6NHIC?022	M22	2.50	0.10	24 -35	303.0	365.1
6NHIC?024	M24	3.00	0.14	24 -35	353.0	425.4
6NHIC?027	M27	3.00	0.21	24 -35	459.0	553.4
6NHIC?030	M30	3.50	0.28	24 -35	561.0	676.0
6NHIC?033	M33	3.50	0.36	24 -35	-	-
6NHIC?036	M36	4.00	0.49	24 -35	817.0	984.5
6NHIC?039	M39	4.00	0.63	35 max	-	-
6NHIC?042	M42	4.50	0.81	35 max	1120.0	1349.6
6NHIC?048	M48	5.00	1.22	35 max	1470.0	1771.4
6NHIC?052	M52	5.00	1.52	35 max	-	-
6NHIC?056	M56	5.50	1.77	35 max	2030.0	2446.2
6NHIC?064	M64	6.00	2.48	35 max	2680.0	3229.4
6NHIC?072	M72	6.00	4.32	35 max	3460.0	4169.3

? = finish/coating codes; see page 4

Based on proof stress of 1205 MPa

Gr 2HM UNC & UN8

CARBON STEEL
ASTM A194/A194M



Product No.	Size	Thread (TPI)	Nut Wgt (kg)	Hardness (HRC)	Stress Area (inch ²)	Proof Load (lbf)
6NH2HMU?010	3/8"	16	0.01	84-99	0.0774	11620
6NH2HMU?012	1/2"	13	0.03	84-99	0.1419	21280
6NH2HMU?016	5/8"	11	0.05	84-99	0.2260	33900
6NH2HMU?020	3/4"	10	0.09	84-99	0.3340	50100
6NH2HMU?022	7/8"	9	0.13	84-99	0.4620	69300
6NH2HMU?025	1"	8	0.19	84-99	0.6060	90900
6NH2HMU?028	1 1/8"	8	0.26	84-99	0.7900	118500
6NH2HMU?032	1 1/4"	8	0.37	84-99	1.0000	150000
6NH2HMU?035	1 3/8"	8	0.48	84-99	1.2330	185000
6NH2HMU?038	1 1/2"	8	0.58	84-99	1.4920	223800
6NH2HMU?040	1 5/8"	8	0.78	84-99	1.7800	267000
6NH2HMU?045	1 3/4"	8	0.96	84-99	20.0800	312000
6NH2HMU?048	1 7/8"	8	1.16	84-99	2.4100	361500
6NH2HMU?050	2"	8	1.40	84-99	2.7700	415500

? = finish/coating codes; see page 4

Based on proof stress of 150,000 psi



Gr 3 UNC & UN8

AISI 501 ASTM A194/A194M



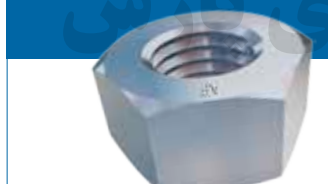
Product No.	Size	Thread (TPI)	Nut Wgt (kg)	Hardness (HRC)	Stress Area (inch ²)	Proof Load (lbf)
6NH3U?012	1/2"	13	0.03	24-35	0.1419	24830
6NH3U?016	5/8"	11	0.05	24-35	0.2260	38550
6NH3U?020	3/4"	10	0.09	24-35	0.3340	58450
6NH3U?022	7/8"	9	0.13	24-35	0.4620	80850
6NH3U?025	1"	8	0.19	24-35	0.6060	106000
6NH3U?028	1 1/8"	8	0.26	24-35	0.7900	138200
6NH3U?032	1 1/4"	8	0.37	24-35	1.0000	175000

? = finish/coating codes; see page 4

Based on proof stress of 175,000 psi

Gr 4 UNC & UN8

CARBON-MOLYBDENUM
ASTM A194/A194M



Product No.	Size	Thread (TPI)	Nut Wgt (kg)	Hardness (HRC)	Stress Area (inch ²)	Proof Load (lbf)
6NH4U?010	3/8"	18	0.01	24-35	0.0774	13560
6NH4U?011	7/16"	14	0.02	24-35	0.1063	18600
6NH4U?012	1/2"	13	0.03	24-35	0.1419	24830
6NH4U?014	9/16"	12	0.04	24-35	0.1820	31850
6NH4U?016	5/8"	11	0.05	24-35	0.2260	39550
6NH4U?020	3/4"	10	0.09	24-35	0.3340	58450
6NH4U?022	7/8"	9	0.13	24-35	0.4620	80850
6NH4U?025	1"	8	0.19	24-35	0.6060	106000
6NH4U?028	1 1/8"	8	0.26	24-35	0.7900	138200
6NH4U?032	1 1/4"	8	0.37	24-35	1.0000	175000
6NH4U?035	1 3/8"	8	0.48	24-35	1.2330	215800
6NH4U?038	1 1/2"	8	0.58	24-35	1.4920	261100
6NH4U?040	1 5/8"	8	0.78	24-35	1.7800	311500
6NH4U?045	1 3/4"	8	0.96	24-35	2.0800	364000
6NH4U?048	1 7/8"	8	1.16	24-35	2.4100	421800
6NH4U?050	2"	8	1.40	24-35	2.7700	484800
6NH4U?057	2 1/4"	8	1.90	24-35	3.5600	623000
6NH4U?065	2 1/2"	8	2.56	24-35	4.4400	777000
6NH4U?072	2 3/4"	8	3.35	24-35	5.4300	950250
6NH4U?075	3"	8	4.32	24-35	-	-
6NH4U?090	3 1/2"	8	6.94	24-35	-	-

? = finish/coating codes; see page 4

Based on proof stress of 175,000 psi



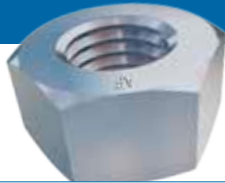
HEAVY HEX NUTS

GRADE 4 & 6

ASTM A194, A194M

Gr 4 Metric

CARBON-MOLYB-
DENUM ASTM A194/
A194M (AF =DIN934,
HEIGHT=DIAMETER)



Product No.	Size	Thread (Pitch)	Nut Wgt (kg)	Hardness (HRC)	Stress Area (inch ²)	Proof Load (lbf)
6NH4C?012	M12	1.75	0.02	24-35	84.3	101.6
6NH4C?016	M16	2.00	0.04	24-35	157.0	189.2
6NH4C?020	M20	2.50	0.08	24-35	245.0	295.2
6NH4C?022	M22	2.50	0.14	24-35	303.0	365.1
6NH4C?024	M24	3.00	0.14	24-35	353.0	425.4
6NH4C?027	M27	3.00	0.28	24-35	459.0	553.4
6NH4C?030	M30	3.50	0.28	24-35	561.0	676.0
6NH4C?033	M33	3.50	0.36	24-35	-	-
6NH4C?036	M36	4.00	0.49	24-35	817.0	984.5
6NH4C?039	M39	4.00	0.63	24-35	-	-
6NH4C?042	M42	4.00	0.81	24-35	1120.0	1349.6
6NH4C?048	M48	4.50	1.22	24-35	1470.0	1771.4
6NH4C?060	M60	5.50	2.56	24-35	-	-

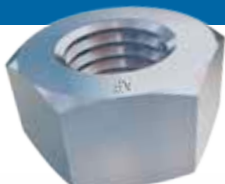
? = finish/coating codes; see page 4

Based on proof stress of 1205 Mpa

PICHGOSTARAN.com

Gr 6 UNC & UN8

AISI 410 ASTM A194/A194M



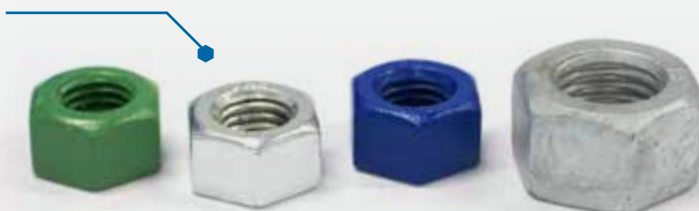
Product No.	Size	Thread (TPI)	Nut Wgt (kg)	Hardness (HRC)	Stress Area (inch ²)	Proof Load (lbf)
6NH6U?010	3/8"	16	0.01	20-28	0.0774	11620
6NH6U?012	1/2"	13	0.03	20-28	0.1419	21280
6NH6U?016	5/8"	11	0.05	20-28	0.2260	33900
6NH6U?020	3/4"	10	0.09	20-28	0.3340	50100
6NH6U?022	7/8"	9	0.13	20-28	0.4620	69300
6NH6U?025	1"	8	0.19	20-28	0.6060	90900
6NH86?028	1 1/8"	8	0.26	20-28	0.7900	118500
6NH86?032	1 1/4"	8	0.37	20-28	1.0000	150000

? = finish/coating codes; see page 4

Based on proof stress of 150,000 psi

Coated Hex Nuts

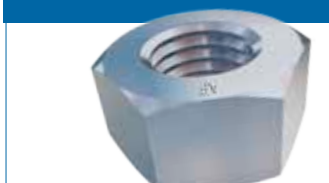
- Xylan Green
 - Zinc Plated
 - Xylan Blue
 - Hot Dipped Galvanise
- see page 3





Gr 7 UNC & UN8

AISI 4140 ASTM A194/A194M



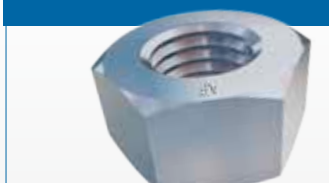
Product No.	Size	Thread (TPI)	Nut Wgt (kg)	Hardness (HRC)	Stress Area (inch ²)	Proof Load (lbf)
6NH7U?010	3/8"	16	0.01	24-35	0.0774	13560
6NH7U?011	7/16"	14	0.02	24-35	0.1063	18600
6NH7U?012	1/2"	13	0.03	24-35	0.1419	24830
6NH7U?016	5/8"	11	0.05	24-35	0.2260	39550
6NH7U?020	3/4"	10	0.09	24-35	0.3340	58450
6NH7U?022	7/8"	9	0.13	24-35	0.4620	80850
6NH7U?025	1"	8	0.19	24-35	0.6060	106000
6NH7U?028	1 1/8"	8	0.26	24-35	0.7900	138200
6NH7U?032	1 1/4"	8	0.37	24-35	1.0000	175000
6NH7U?035	1 3/8"	8	0.48	24-35	1.2330	215800
6NH7U?038	1 1/2"	8	0.58	24-35	1.4920	261100
6NH7U?040	1 5/8"	8	0.78	24-35	1.7800	311500
6NH7U?045	1 3/4"	8	0.96	24-35	2.0800	364000
6NH7U?048	1 7/8"	8	1.16	24-35	2.4100	421800
6NH7U?050	2"	8	1.40	24-35	2.7700	484800
6NH7U?065	2 1/2"	8	2.56	24-35	4.4400	777000
6NH7U?072	2 3/4"	8	2.82	24-35	5.4300	950250
6NH7U?075	3"	8	4.32	24-35	-	-
6NH7U?083	3 1/4"	8	6.94	24-35	-	-
6NH7U?090	3 1/2"	8	6.94	24-35	-	-

? = finish/coating codes; see page 4

Based on proof stress of 175,000 psi

Gr 7M UNC & UN8

AISI 4140 ASTM A194/A194M



Product No.	Size	Thread (TPI)	Nut Wgt (kg)	Hardness (HRC)	Stress Area (inch ²)	Proof Load (lbf)
6NH7MU?016	5/8"	11	0.05	84-99	0.2260	33900
6NH7MU?020	3/4"	10	0.09	84-99	0.3340	50100
6NH7MU?022	7/8"	9	0.13	84-99	0.4620	69300
6NH7MU?025	1"	8	0.19	84-99	0.6060	90900
6NH7MU?028	1 1/8"	8	0.26	84-99	0.7900	118500
6NH7MU?032	1 1/4"	8	0.37	84-99	1.0000	150000

? = finish/coating codes; see page 4

Based on proof stress of 150,000 psi.



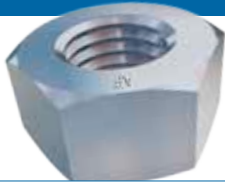
HEAVY HEX NUTS

GRADE 8 & 8C

ASTM A194, A194M

Gr 8 UNC & UN8

AISI 304 ASTM A194/A194M



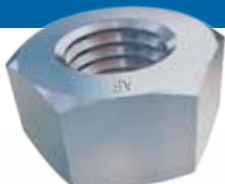
Product No.	Size	Thread (TPI)	Nut Wgt (kg)	Hardness (HRB)	Stress Area (inch ²)	Proof Load (lbf)
6NH8U?010	3/8"	16	0.01	60-105	0.0774	6200
6NH8U?012	1/2"	13	0.03	60-105	0.1419	11350
6NH8U?016	5/8"	11	0.05	60-105	0.2260	18080
6NH8U?020	3/4"	10	0.09	60-105	0.3340	26720
6NH8U?022	7/8"	9	0.13	60-105	0.4620	36960
6NH8U?025	1"	8	0.19	60-105	0.6060	48480
6NH8U?028	1 1/8"	8	0.26	60-105	0.7900	63200
6NH8U?032	1 1/4"	8	0.37	60-105	1.0000	80000
6NH8U?035	1 3/8"	8	0.48	60-105	1.2330	98640
6NH8U?038	1 1/2"	8	0.58	60-105	1.4920	119360
6NH8U?040	1 5/8"	8	0.78	60-105	-	-
6NH8U?045	1 3/4"	8	0.96	60-105	-	-
6NH8U?048	1 7/8"	8	1.16	60-105	-	-
6NH8U?050	2"	8	1.40	60-105	-	-

? = finish/coating codes; see page 4

Based on proof stress of 80,000 psi

Gr 8 Metric

AISI 304 ASTM A194/
A194M (AF=DIN934,
HEIGHT=DIAMETER)



Product No.	Size	Thread (Pitch)	Nut Wgt (kg)	Hardness (HRB)	Stress Area (mm ²)	Proof Load (kN)
6NH8C?010	M10	1.50	0.01	60-105	58.0	31.9
6NH8C?012	M12	1.75	0.02	60-105	84.3	46.4
6NH8C?016	M16	2.00	0.04	60-105	157.0	86.4
6NH8C?020	M20	2.50	0.08	60-105	245.0	134.8
6NH8C?024	M24	3.00	0.14	60-105	353.0	194.2

? = finish/coating codes; see page 4

Based on proof stress of 550 MPa

Gr 8C UNC & UN8

AISI 347 ASTM A194/A194M



Product No.	Size	Thread (TPI)	Nut Wgt (kg)	Hardness (HRB)	Stress Area (inch ²)	Proof Load (lbf)
6NH8CU?012	1/2"	13	0.03	60-105	0.1419	11350
6NH8CU?016	5/8"	11	0.05	60-105	0.2260	18080
6NH8CU?020	3/4"	10	0.09	60-105	0.3340	26720
6NH8CU?022	7/8"	9	0.13	60-105	0.4620	36960
6NH8CU?025	1"	8	0.19	60-105	0.6060	48480
6NH8CU?028	1 1/8"	8	0.26	60-105	0.7900	63200

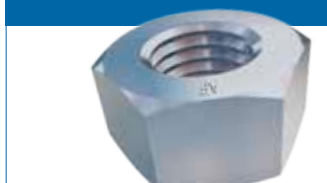
? = finish/coating codes; see page 4

Based on proof stress of 80,000 psi



Gr 8M UNC & UN8

AISI 316 ASTM A194/A194M



Product No.	Size	Thread (TPI)	Nut Wgt (kg)	Hardness (HRB)	Stress Area (inch ²)	Proof Load (lbf)
6NH8MU?008	5/16"	18	0.01	60-105	0.0524	4190
6NH8MU?010	3/8"	16	0.01	60-105	0.0774	6200
6NH8MU?011	7/16"	14	0.02	60-105	0.1063	8500
6NH8MU?012	1/2"	13	0.03	60-105	0.1419	11350
6NH8MU?014	9/16"	12	0.04	60-105	0.1820	14560
6NH8MU?016	5/8"	11	0.05	60-105	0.2260	18080
6NH8MU?020	3/4"	10	0.09	60-105	0.3340	26720
6NH8MU?022	7/8"	9	0.13	60-105	0.4620	36960
6NH8MU?025	1"	8	0.19	60-105	0.6060	48480
6NH8MU?028	1 1/8"	8	0.26	60-105	0.7900	63200
6NH8MU?032	1 1/4"	8	0.37	60-105	1.0000	80000
6NH8MU?035	1 3/8"	8	0.48	60-105	1.2330	98640
6NH8MU?038	1 1/2"	8	0.58	60-105	1.4920	119360
6NH8MU?040	1 5/8"	8	0.78	60-105	-	-
6NH8MU?045	1 3/4"	8	0.96	60-105	-	-
6NH8MU?048	1 7/8"	8	1.16	60-105	-	-
6NH8MU?050	2"	8	1.40	60-105	-	-

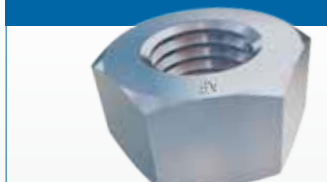
PICHGOSTARAN.com
پیچ گستران انرژی پارس

? = finish/coating codes; see page 4

Based on proof stress of 80,000 psi

Gr 8M Metric

AISI 316 ASTM A194/
A194M (AF=DIN934,
HEIGHT=DIAMETER)



Product No.	Size	Thread (Pitch)	Nut Wgt (kg)	Hardness (HRB)	Stress Area (mm ²)	Proof Load (kN)
6NH8MC?010	M10	1.50	0.01	60-105	58.0	31.9
6NH8MC?012	M12	1.75	0.02	60-105	84.3	46.4
6NH8MC?016	M16	2.00	0.04	60-105	157.0	86.4
6NH8MC?020	M20	2.50	0.08	60-105	245.0	134.8
6NH8MC?024	M24	3.00	0.14	60-105	353.0	194.2

? = finish/coating codes; see page 4

Based on proof stress of 550 MPa



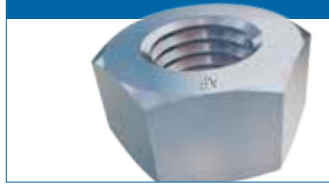
HEAVY HEX NUTS

GRADE 8MA & 8T

ASTM A194, A194M

Gr 8MA UNC & UN8

AISI 316 ASTM A194/A194M



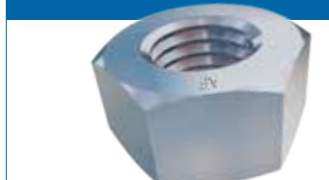
Product No.	Size	Thread (TPI)	Nut Wgt (kg)	Hardness (HRB)
6NH8MAU?012	1/2"	13	0.03	60-90
6NH8MAU?016	5/8"	11	0.05	60-90
6NH8MAU?020	3/4"	10	0.09	60-90
6NH8MAU?022	7/8"	9	0.13	60-90
6NH8MAU?025	1"	8	0.19	60-90
6NH8MAU?028	1 1/8"	8	0.26	60-90
6NH8MAU?032	1 1/4"	8	0.37	60-90
6NH8MAU?035	1 3/8"	8	0.48	60-90
6NH8MAU?038	1 1/2"	8	0.58	60-90
6NH8MAU?040	1 5/8"	8	0.78	60-90
6NH8MAU?045	1 3/4"	8	0.96	60-90
6NH8MAU?048	1 7/8"	8	1.16	60-90
6NH8MAU?050	2"	8	1.40	60-90

? = finish/coating codes; see page 4

PICHGOSTARAN.com

Gr 8T UNC & UN8

AISI 321 ASTM A194/A194M



Product No.	Size	Thread (TPI)	Nut Wgt (kg)	Hardness (HRB)	Stress Area (inch ²)	Proof Load (lbf)
6NH8TU?010	3/8"	16	0.01	60-105	0.0774	6200
6NH8TU?012	1/2"	13	0.03	60-105	0.1419	11350
6NH8TU?016	5/8"	11	0.05	60-105	0.2260	18080
6NH8TU?020	3/4"	10	0.09	60-105	0.3340	26720
6NH8TU?022	7/8"	9	0.13	60-105	0.4620	36960
6NH8TU?025	1"	8	0.19	60-105	0.6060	48480
6NH8TU?028	1 1/8"	8	0.26	60-105	0.7900	63200
6NH8TU?032	1 1/4"	8	0.37	60-105	1.0000	80000
6NH8TU?038	1 1/2"	8	0.58	60-105	1.4920	119360
6NH8TU?045	1 3/4"	8	0.96	60-105	-	-

? = finish/coating codes; see page 4

Based on proof stress of 80,000 psi

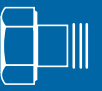


ALLFASTENERS

SERVICE | SOLUTIONS | SUPPLY FOR ALL YOUR FASTENING NEEDS

HEAVY HEX BOLTS GRADE B7 & B7M

ASTM A193, A193M



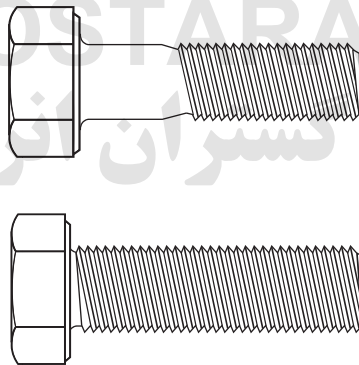
B7 & B7M HEAVY HEX BOLTS ASTM A193 / A193M

For the specialised applications we can also make available grade B heavy hex bolts in B7 & B7M materials. These bolts and screws must have a tensile strength of 414 MPa (60 ksi) to 690 MPa (100 ksi) and are intended for use with cast iron flanged joints in piping systems.

Industrial fasteners are manufactured to specific international standards:

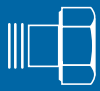
- ASTM A307 Grade B - Heavy Hex Bolts from 1/2" to 2-1/2" diameter
- ISO 4014 Grade A & B - Heavy Hex Bolt from M1.6 to M64 diameter
- ISO 4017 Grade A & B - Heavy Hex Screw from M1.6 to M64 diameter

PICHGOSTARAN.com
پیش گستران انرژی پارس



ASTM A307 Hex Bolts in various diameters. Xylan Blue coating.

See over page for ASTM A307 dimensions.



HEAVY HEX BOLTS

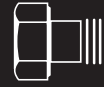
GRADE B7 & B7M

ASTM A193, A193M

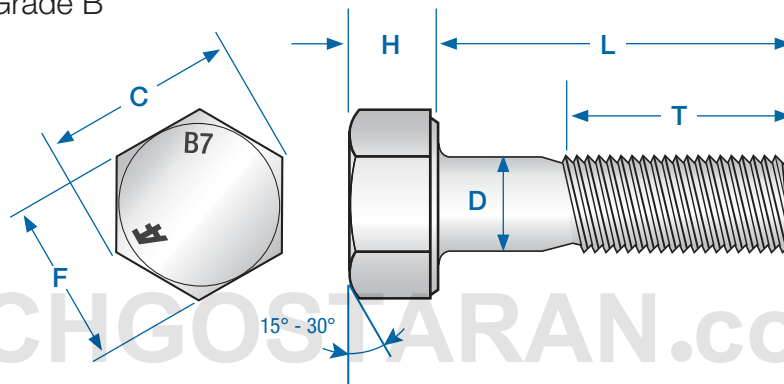
DIMENSIONS

ASTM A193 / A193M

GRADE B7 / B7M



ASTM A307 Grade B



PICHGOSTARAN.com

بیج گستان انرژی پارس

D Diameter	F Width Across Flats		C Width Across Corners		H Height				
	Max	Basic	Max	Min	Max	Min	Basic	Max	Min
1/2"	0.515	7/8	0.875	0.850	1.010	0.969	11/32	0.364	0.302
5/8"	0.642	1 1/16	1.062	1.031	1.227	1.175	27/64	0.444	0.378
3/4"	0.768	1 1/4	1.250	1.212	1.443	1.383	1/2	0.524	0.455
7/8"	0.895	1 7/16	1.438	1.394	1.660	1.589	37/64	0.604	0.531
1"	1.022	1 5/8	1.625	1.575	1.876	1.796	43/64	0.700	0.591
1 1/8"	1.149	1 13/16	1.812	1.756	2.093	2.002	3/4	0.780	0.658
1 1/4"	1.277	2	2.000	1.938	2.309	2.209	27/32	0.876	0.749
1 3/8"	1.404	2 3/16	2.188	2.119	2.526	2.416	29/32	0.940	0.810
1 1/2"	1.531	2 3/8	2.375	2.300	2.742	2.622	1	1.036	0.902
1 3/4"	1.785	2 3/4	2.750	2.662	3.175	3.035	1 5/32	1.196	1.054
2"	2.039	3 1/8	3.125	3.025	3.608	3.449	1 11/32	1.388	1.175
2 1/4"	2.305	3 1/2	3.500	3.388	4.041	3.862	1 1/2	1.548	1.327
2 1/2"	2.559	3 7/8	3.875	3.750	4.474	4.275	1 21/32	1.708	1.479

Dimensions per ASME B18.2.1 1996

All dimensions are shown in inches.

Standard Thread Lengths

For bolt lengths ≤ 6" : Thread length = (diameter x 2) + 1/4"

For bolt lengths > 6" : Thread length = (diameter x 2) + 1/2"

eg; 1/2" Bolt: (1/2 x 2) + 1/4" = 1.25" thread length

eg; 1 1/4" Bolt: (1 1/4" x 2) + 1/2" = 3" thread length



TM

SERVICE | SOLUTIONS | SUPPLY
FOR ALL YOUR FASTENING NEEDS

STUDBOLTS FOR OIL, GAS & PETROCHEMICAL INDUSTRIES



IMPERIAL / METRIC EQUIVALENT VALUE (mm)

1/8"	M3	3.1750
-	M4	-
3/16"	M5	4.7625
1/4"	M6	6.3500
5/16"	M8	7.9375
3/8"	M10	9.5250
1/2"	M12	12.7000
9/16"	M14	14.2875
5/8"	M16	15.8750
-	M18	-
3/4"	M20	19.0500
7/8"	M22	22.2250
1"	M24	25.4001
1 1/8"	M27	28.5751
1 1/4"	M30	31.7501
1 3/8"	M33	34.9251
1 1/2"	M36	38.1001
1 5/8"	M39	41.2751
-	M42	-
1 3/4"	M45	44.4501
1 7/8"	M48	47.6251
2"	M52	50.8001
2 1/4"	M56	57.1501
-	M60	-
2 1/2"	M64	63.5001
2 3/4"	M72	69.8501
3"	M80	76.2002
3 1/4"	M-	82.5502
3 1/2"	M90	88.9002
3 3/4"	M-	95.2502
4"	M100	101.6002



see page 6 for Pitch Values



**B7 & L7
 UNC & UN8**

6ft ALLTHREAD

B7 ASTM A193/A193M &
 L7 ASTM A320/A320M
 (SERVICE CONDITIONS MIN:
 -100°C MAX: 400°C)



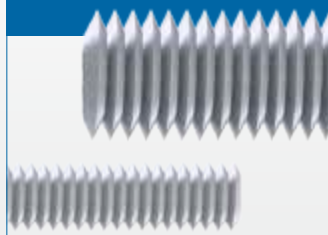
Product No.	Size	6ft Wgt (kg)	Tensile Strength (MPa) min.		Yield Strength (MPa) min. 0.2% offset	
			B7	L7	B7	L7
6?TRUU06	1/4"	0.33	860	-	720	-
6?TRUU08	5/16	0.54	860	-	720	-
6?TRUU10	3/8"	0.81	860	860	720	725
6?TRUU11	7/16"	1.09	860	860	720	725
6?TRUU12	1/2"	1.46	860	860	720	725
6?TRUU14	9/16"	1.78	860	-	720	-
6?TRUU16	5/8"	2.31	860	860	720	725
6?TRUU20	3/4"	3.39	860	860	720	725
6?TRUU22	7/8"	4.64	860	860	720	725
6?TRUU25	1"	6.09	860	860	720	725
6?TRUU28	1 1/8"	7.85	860	860	720	725
6?TRUU32	1 1/4"	9.86	860	860	720	725
6?TRUU35	1 3/8"	12.09	860	-	720	-
6?TRUU38	1 1/2"	14.64	860	-	720	-
6?TRUU40	1 5/8"	17.21	860	-	720	-
6?TRUU45	1 3/4"	20.14	860	-	720	-
6?TRUU48	1 7/8"	23.26	860	-	720	-
6?TRUU50	2"	26.65	860	-	720	-
6?TRUU57	2 1/4"	34.07	860	-	720	-
6?TRUU65	2 1/2"	42.47	860	-	720	-
6?TRUU72	2 3/4"	51.65	795	-	655	-
6?TRUU75	3"	61.90	795	-	655	-
6?TRUU90	3 1/2"	84.97	795	-	655	-

Material Grade (?) : B7 or L7

**B7
 Metric**

6ft ALLTHREAD

B7 ASTM A193/A193M
 (SERVICE CONDITIONS MIN:
 -100°C MAX: 400°C)



Product No.	Size	6ft Wgt (kg)	Tensile Strength (MPa) min.	Yield Strength (MPa) min. 0.2% offset
6B7TRCU10	M10	0.89	860	720
6B7TRCU12	M12	1.29	860	720
6B7TRCU16	M16	2.40	860	720
6B7TRCU20	M20	3.76	860	720
6B7TRCU22	M22	4.62	860	720
6B7TRCU24	M24	5.43	860	720
6B7TRCU27	M27	7.01	860	720
6B7TRCU30	M30	8.60	860	720
6B7TRCU33	M33	10.43	860	720
6B7TRCU36	M36	12.50	860	720
6B7TRCU39	M39	14.85	860	720
6B7TRCU42	M42	17.10	860	720
6B7TRCU48	M48	22.45	860	720



6FT ALLTHREAD

L7M & B16

ASTM A193, A193M

L7M
UNC

6ft ALLTHREAD
L7M ASTM A320/A320M



Product No.	Size	6ft Wgt (kg)	Tensile Strength (MPa) min.	Yield Strength (MPa) min. 0.2% offset	Hardness (HRB)
6L7MTRUU012	1/2"	1.46	690	550	99
6L7MTRUU016	5/8"	2.31	690	550	99
6L7MTRUU020	3/4"	3.39	690	550	99
6L7MTRUU022	7/8"	4.64	690	550	99
6L7MTRUU025	1"	6.09	690	550	99

PICHGOSTARAN.com

پیش گستران انرژی پارس

B16
UNC & UN8

6ft ALLTHREAD
ASTM A193/A193M (SERVICE CONDITIONS MIN: 0°C MAX: 520°C)



Product No.	Size	6ft Wgt (kg)	Tensile Strength (MPa) min.	Yield Strength (MPa) min. 0.2% offset
6B16TRUU10	3/8"	0.81	860	725
6B16TRUU11	7/16"	1.09	860	725
6B16TRUU12	1/2"	1.46	860	725
6B16TRUU16	5/8"	2.31	860	725
6B16TRUU20	3/4"	3.39	860	725
6B16TRUU22	7/8"	4.64	860	725
6B16TRUU25	1"	6.09	860	725
6B16TRUU28	1 1/8"	7.85	860	725
6B16TRUU32	1 1/4"	9.86	860	725
6B16TRUU35	1 3/8"	12.09	860	725
6B16TRUU35	1 1/2"	14.64	860	725
6B16TRUU40	1 5/8"	17.21	860	725
6B16TRUU45	1 3/4"	20.14	860	725
6B16TRUU48	1 7/8"	23.36	860	725
6B16TRUU50	2"	26.65	860	725
6B16TRUU65	2 1/2"	42.47	860	725
6B16TRUU75	3"	61.90	860	725
6B16TRUU90	3 1/2"	84.97	860	725



B16
Metric
 6ft ALLTHREAD
 ASTM A193/A193M (SERVICE
 CONDITIONS MIN: 0°C MAX:
 520°C)

Product No.	Size	6ft Wgt (kg)	Tensile Strength (MPa) min.	Yield Strength (MPa) min. 0.2% offset
6B16TRCU12	M12	1.57	860	725
6B16TRCU16	M16	2.60	860	725
6B16TRCU20	M20	3.71	860	725
6B16TRCU22	M22	5.09	860	725
6B16TRCU24	M24	6.69	860	725
6B16TRCU30	M30	13.78	860	725

PICHGOSTARAN.com
 پیچ گستران انرژی پارس

B6
UNC & UN8
 6ft ALLTHREAD
 ASTM A193/A193M (SERVICE
 CONDITIONS MIN: 0°C MAX:
 500°C)

Product No.	Size	6ft Wgt (kg)	Tensile Strength (MPa) min.	Yield Strength (MPa) min. 0.2% offset
6B6TRUU10	3/8"	0.81	760	585
6B6TRUU12	1/2"	1.46	760	585
6B6TRUU16	5/8"	2.31	760	585
6B6TRUU20	3/4"	3.39	760	585
6B6TRUU22	7/8"	4.64	760	585
6B6TRUU25	1"	6.09	760	585
6B6TRUU28	1 1/8"	7.85	760	585
6B6TRUU32	1 1/4"	9.86	760	585
6B6TRUU38	1 1/2"	14.64	760	585



6FT ALLTHREAD

B8 & B8M, CLASS 1 & 2

ASTM A193, A193M

B8 Class 1 & 2 UNC & UN8

6ft ALLTHREAD

CLASS 1 & CLASS 2 ASTM
A193 / A193M (SERVICE
CONDITIONS MIN: -250°C
MAX: 575°C)

Product No.	Size	6ft Wgt (kg)	Tensile Strength (MPa) min.		Yield Strength (MPa) min. 0.2% offset	
			Class 1	Class 2	Class 1	Class2
6?TRUU10	3/8"	0.81	515	-	205	-
6?TRUU12	1/2"	1.46	515	860	205	690
6?TRUU16	5/8"	2.31	515	860	205	690
6?TRUU20	3/4"	3.39	515	860	205	690
6?TRUU22	7/8"	4.64	515	795	205	550
6?TRUU25	1"	6.09	515	795	205	550
6?TRUU28	1 1/8"	7.85	515	725	205	450
6?TRUU32	1 1/4"	9.86	515	725	205	450

Material Grade (?) : B8 = Class 1 or
B82 = Class 2

PICHGOSTARAN.com
پیچ گستران انرژی پارس

B8M Class 1 & 2 UNC & UN8

6ft ALLTHREAD

CLASS 1 & CLASS 2 ASTM
A193 / A193M (SERVICE
CONDITIONS MIN: -250°C
MAX: 600°C)

Product No.	Size	6ft Wgt (kg)	Tensile Strength (MPa) min.		Yield Strength (MPa) min. 0.2% offset	
			Class 1	Class 2	Class 1	Class2
6?TRUU10	3/8"	0.81	515	-	205	-
6?TRUU11	7/16"	1.09	-	760	-	655
6?TRUU12	1/2"	1.46	515	760	205	655
6?TRUU14	9/16"	1.78	-	760	-	655
6?TRUU16	5/8"	2.31	515	760	205	655
6?TRUU20	3/4"	3.39	515	760	205	655
6?TRUU22	7/8"	4.64	515	760	205	655
6?TRUU25	1"	6.09	515	690	205	550
6?TRUU28	1 1/8"	7.85	515	655	205	450
6?TRUU32	1 1/4"	9.86	515	655	205	450
6?TRUU35	1 3/8"	12.09	515	-	205	-
6?TRUU38	1 1/2"	15.38	515	620	205	345
6?TRUU40	1 5/8"	17.21	515	-	205	-
6?TRUU45	1 3/4"	20.14	515	-	205	-
6?TRUU48	1 7/8"	23.26	515	-	205	-

Material Grade (?) : B8M = Class 1 or
B8M2 = Class 2



ALLFASTENERS

SERVICE | SOLUTIONS | SUPPLY FOR ALL YOUR FASTENING NEEDS

6FT ALLTHREAD B8T CLASS 1 & 2

ASTM A193, A193M



B8T Class 1 & 2 UNC & UN8

6ft ALLTHREAD

ASTM A193 / A193M (SER-
VICE CONDITIONS MIN:
-250°C MAX: 575°C)



Product No.	Size	6ft Wgt (kg)	Tensile Strength (MPa) min.	Yield Strength (MPa) min. 0.2% offset
6?TRUU12	1/2"	0.79	515	205
6?TRUU16	5/8"	1.30	515	205
6?TRUU20	3/4"	1.86	515	205
6?TRUU22	7/8"	2.55	515	205
6?TRUU25	1"	3.35	515	205
6?TRUU28	1 1/8"	5.70	515	205
6?TRUU32	1 1/4"	6.90	515	205
6?TRUU38	1 1/2"	8.00	515	205

Material Grade (?) : B8T = Class 1 or
B8T2 = Class 2

PICHGOSTARAN.com
پیچ گستران انرژی پارس



see page 3 for PLATING & COATINGS



TECHNICAL STUD BOLTS

FERRITIC STEEL

CHEMICAL & MECHANICAL PROPERTIES HIGH TENSILE BOLTS



FERRITIC STEEL

GRADE	B5	B6	B7	B16
Material Specifications	AISI 4140	AISI Type 410	Chromium-Molybdenum	Chromium-Molybdenum-Vanadium
Material Service Conditions*	-	min: 0°C max: 500°C	min: -100°C max: 400°C	min: 0°C max: 520°C

CHEMICAL COMPOSITION

	B5	B6	B7	B16
Carbon	0.10 min	0.08-0.15	0.37-0.49	0.36-0.47
Manganese, max	1.00	1.00	0.65-1.10	0.45-0.70
Phosphorus, max	0.040	0.040	0.035	0.035
Sulfur, max	0.030	0.030	0.040	0.040
Silicon	1.00 max	1.00 max	0.15-0.35	0.15-0.35
Chromium	4.0-6.0	11.5-13.5	0.75-1.20	0.80-1.15
Molybdenum	0.40-0.65	-	0.15-0.25	0.50-0.65
Vanadium	-	-	-	0.25-0.35
Aluminum, max %	-	-	-	0.015

MECHANICAL COMPOSITION

	B5	B6	B7	B16		
Diameter, inches	< 4" incl.	< 4" incl.	< 2 1/2" incl.	> 2 1/2" to 4"	< 2 1/2" incl.	> 2 1/2" to 4"
Tensile Strength, min, MPa	690	760	860	795	860	760
Yield Strength, min 0.2% offset, MPa	550	585	720	655	725	655
Elongation in 4D, min %	16	15	16	16	18	17
Reduction of Area, min %	50	50	50	50	50	45
Brinell Hardness, max	-	-	321 HBW or 35HRC	321 HBW or 35HRC	321 HBW or 35HRC	321 HBW or 35HRC

HBW: Brinell Hardness (Number) HRC: Rockwell Hardness C Scale, min HRB: Rockwell Hardness B Scale, min

*actual metal temperatures



CHEMICAL & MECHANICAL PROPERTIES HIGH TENSILE BOLTS



AUSTENITIC STEELS, CLASS 1 & 2

GRADE	B8 Class 1 & Class 2	B8M Class 1 & Class 2
Material Specifications	AISI Type 304	AISI Type 316
Material Service Conditions*	min: -250°C max: 575°C (Class 1) max: 600°C (Class 2)	

CHEMICAL COMPOSITION

	B8 Class 1 & Class 2	B8M Class 1 & Class 2
Carbon, max	0.08	0.08
Manganese, max	2.00	2.00
Phosphorus, max	0.045	0.045
Sulfur, max	0.030	0.030
Silicon, max	1.00	1.00
Chromium	18.0-20.0	16.0-18.0
Nickel	8.0-11.0	10.0-14.0
Molybdenum		2.00-3.00

MECHANICAL COMPOSITION

	B8 Class 1		B8 Class 2		
	all diametres	< 3/4" incl.	> 3/4" to 1"	> 1" to 1-1/4"	> 1-1/4" to 1-1/2"
Diameter, inches	all diametres	< 3/4" incl.	> 3/4" to 1"	> 1" to 1-1/4"	> 1-1/4" to 1-1/2"
Tensile Strength, min, MPa	515	860	795	725	690
Yield Strength, min 0.2% offset, MPa	205	690	550	450	345
Elongation in 4D, min %	30	12	15	20	28
Reduction of Area, min %	50	35	35	35	45
Brinell Hardness, max	223 HBW or 96 HRB	321 HBW or 35HRC	321 HBW or 35HRC	321 HBW or 35HRC	321 HBW or 35HRC

	B8M Class 1		B8M Class 2		
	all diametres	< 3/4"	> 3/4" to 1"	> 1" to 1-1/4"	> 1-1/4" to 1-1/2"
Diameter, inches	all diametres	< 3/4"	> 3/4" to 1"	> 1" to 1-1/4"	> 1-1/4" to 1-1/2"
Tensile Strength, min, MPa	515	760	690	655	620
Yield Strength, min 0.2% offset, MPa	205	655	550	450	345
Elongation in 4D, min %	30	15	20	25	30
Reduction of Area, min %	50	45	45	45	45
Brinell Hardness, max	223 HBW or 96 HRB	321 HBW or 35HRC	321 HBW or 35HRC	321 HBW or 35HRC	321 HBW or 35HRC

HBW: Brinell Hardness (Number) HRC: Rockwell Hardness C Scale, min HRB: Rockwell Hardness B Scale, min

*actual metal temperatures



TECHNICAL HEX NUTS

FERRITIC STEEL

CHEMICAL & MECHANICAL PROPERTIES HEAVY HEX NUTS



FERRITIC STEEL

	2H & 2HM	4	3	6	7 & 7M
Material Specifications	carbon	carbon, molybdenum	Type 501	Type 410	Type 4140 / 4142 / 4145
Material Service Conditions*	min: 0°C max: 450°C	min: -100°C max: 520°C	-	min: 0°C max: 575°C	min: -100°C max: 565°C

CHEMICAL COMPOSITION

	2H & 2HM	4	3	6	7 & 7M
Carbon %	0.40 min	0.40-0.50	0.10 min	0.15	0.37-0.49
Manganese, max %	1.00	0.70-0.90	1.00	1.00	0.65-1.10
Phosphorus, %	0.040	0.035	0.040	0.040	0.035
Sulfur, %	0.050	0.040	0.030	0.030	0.04
Silicon, %	0.40	0.15-0.35	1.00	1.00	0.15-0.35
Chromium %	-	-	4.0-6.0	11.5-13.5	0.75-1.20
Nickel, %	-	-	-	-	-
Molybdenum, %	-	0.20-0.30	0.40-0.65	-	0.15-0.25

MECHANICAL COMPOSITION

	2H up to 1 1/2" or M36 incl.	2H over 1 1/2" or M36	2HM & 7M	3, 4, 7	6
Brinell Hardness	248-327	212-327	159-235	248-327	228-271
Sample Nut after Treatment*	179HB, 89HRB	147HB, 79HRB	159HB, 84HRB	201HR, 94HRB	-

*HB: Brinell Hardness, min. HRB: Rockwell Hardness B Scale, min.

*actual metal temperatures



CHEMICAL & MECHANICAL PROPERTIES HEAVY HEX NUTS



AUSTENITIC STEEL

	8	8C	8M & 8MA	8T
Material Specifications	Type 304	Type 347	Type 316	Type 321
Material Service Conditions*	min: -250°C max: 575°C	-	min: -250°C max: 600°C	min: -250°C max: 575°C

CHEMICAL COMPOSITION

	8	8C	8M & 8MA	8T
Carbon %	0.08	0.08	0.08	0.08
Manganese, max %	2.00	2.00	2.00	2.00
Phosphorus, %	0.045	0.045	0.045	0.045
Sulfur, %	0.030	0.030	0.030	0.030
Silicon, %	1.00	1.00	1.00	1.00
Chromium %	18.0-20.0	17.0-19.0	16.0-18.0	17.0-19.0
Nickel, %	8.0-11.0	9.0-12.0	10.0-14.0	9.0-12.0
Molybdenum, %	-	-	2.00-3.00	-
Titanium, %	-	-	-	5x carbon content min, 0.70 max
Columbium & Tantalum, %	-	10x carbon content, min	-	-
Nitrogen, %	-	-	-	0.10

MECHANICAL COMPOSITION

	8, 8C, 8M, 8T	8MA
Brinell Hardness (HB)	126-300	126-300
Sample Nut after Treatment*	-	-

*HB: Brinell Hardness, min. HRB: Rockwell Hardness B Scale, min.

*actual metal temperatures

UNIT CONVERSIONS

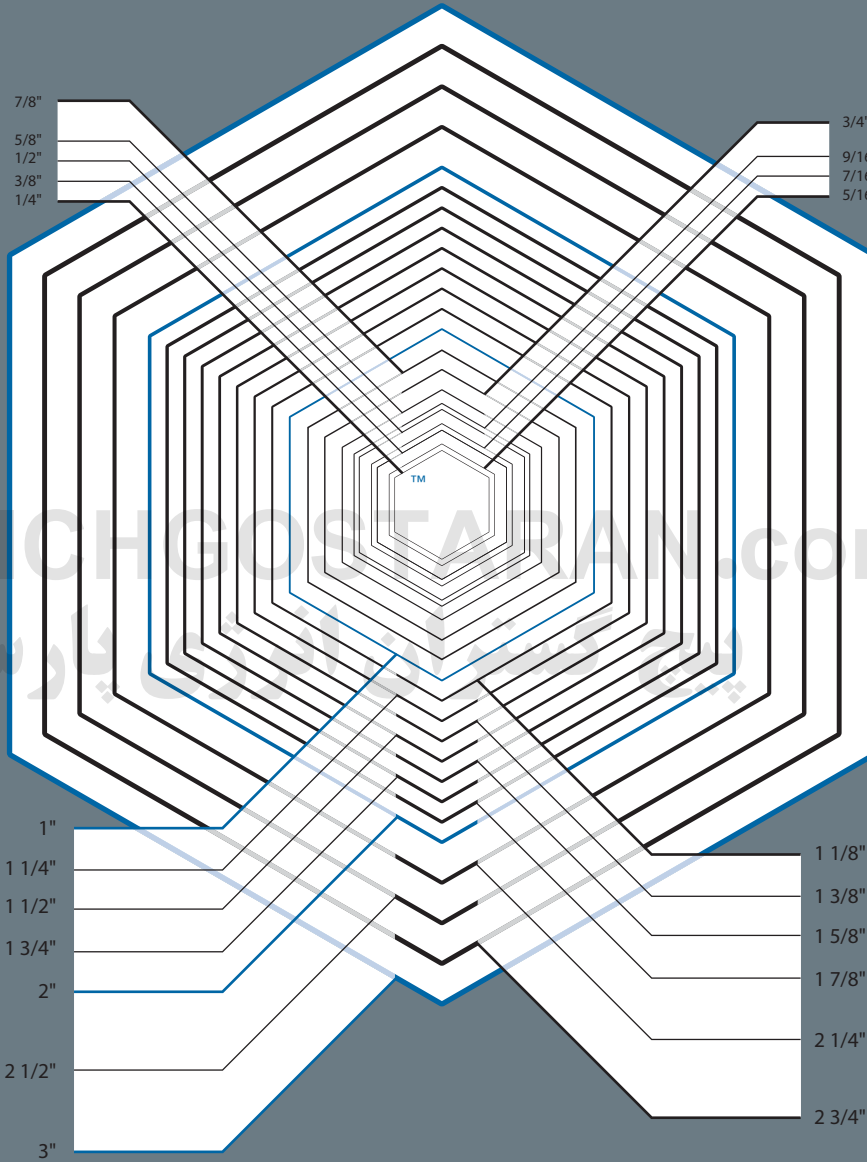
Unit	Convert to	Multiply by
Length & Mass		
Inch (")	Millimetre (mm)	25.4
Ounce (oz.)	Gram (g)	28.3495
Pound (lb)	Kilogram (kg)	0.4536
Metric Tonne (t = 1,000kg)	Pound (lb)	2,204.60
Imperial Long Ton (ton = 1,016kg)	Pound (lb)	2,240
Pressure & Force		
Pounds per inch ² (psi)	Mega Pascal (MPa)	0.00689
Kilopound per inch ² (ksi)	Mega Pascal (MPa)	6.89
Kilopound per inch ² (ksi)	Pounds per inch ² (psi)	1000
Mega Pascal (MPa)	Pounds per inch ² (psi)	145
Pounds per inch ² (psi)	Kg/mm ²	0.000703
Kg/mm ²	Pounds per inch ² (psi)	1422.5
Pound Force / inch ² (psi)	Ton Force / inch ² (Tsi)	0.000446
Ton Force / inch ² (Tsi)	Pounds per inch ² (psi)	2240
Ton Force (Tonf)	Pounds Force (lbf)	2240
Pounds Force (lbf)	Kilo Newton (kN)	0.00445
Kilo Newton (kN)	Pounds Force (lbf)	224.8
Torque		
Pound Force Foot (lbf.ft)	Newton Metre (Nm)	1.35582
Newton Metre (Nm)	Pound Force Foot (lbf.ft)	0.737562
Pound Force Inch (lbf.in)	Newton Metre (Nm)	0.113
Newton Metre (Nm)	Pound Force Inch (lbf.in)	8.851

Coated Studbolts

Xylan Green
Xylan Blue
Zinc Plated
see page 3



HEX NUT GAUGE



This Hex Nut guide is intended to be used for reference purposes only.
See page 28 for Hex Nut dimensions and weights.

Inches

This rule is intended for reference purposes only.





<https://pichgostaran.com/>

PICHGOSTARAN.com
پیح گستران انرژی پارس

Melbourne – Head Office

PO Box 1025 Tullamarine VIC 3043
78 – 84 Logistics Street, Keilor Park VIC 3042
t +61 (3) 9330 0555 | f +61 (3) 9338 6434
ABN 86 766 075 300 ACN 113 948 100

ALLFASTENERS Pty Ltd - Australia
Melbourne, Sydney, Adelaide

ALLFASTENERS USA, LLC
Cleveland, New York, Los Angeles & Nebraska



© 2014 ALLFASTENERS Pty. Ltd. - Australia.

This catalogue is intended for those involved in our company. Allfasteners does not sell to individuals. No part of this catalogue may be reproduced, or copied, modified or adapted without prior written consent. Allfasteners is a registered Trademark. All pictures in this catalogue are meant to give an impression. This catalogue has been compiled with the utmost care. Nevertheless it is possible that certain information included is now outdated or no longer complete. This publications is distributed on the understanding that the publisher is not responsible for results of actions taken purely on the basis of this catalogue. Allfasteners therefore recommends taking professional expert advice before undertaking any actions purely based on the information in this catalogue



ALLFASTENERS Pty Ltd implements a Quality System, certified by QAS International according to ISO 9001:2008. Certificate No. AU1439 with exclusion of clause (7.3). Certification applies to supply and express delivery of fasteners to the industrial, heavy industry, mining and construction industries.

ISO 9001:2008 CERT NO. AU1439



TM

SERVICE | SOLUTIONS | SUPPLY
FOR ALL YOUR FASTENING NEEDS

PICHGOSTARAN.com
پیح گستران انرژی پارس

// Country Of Origin Approved Fasteners In Stock

// B7 Grade Hex Bolts



ALLFASTENERS is an
ISO 9001:2008
Accredited Company
CERT NO. AU1439

